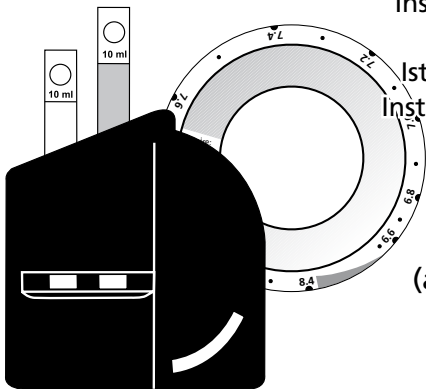


CHECKIT® Comparator D 55



Bedienungsanleitung (DE)

Instruction Manual (GB)

Mode d'emploi (FR)

Istruzioni per l'uso (I)

Instrucciones de uso (ES)

Chlordioxid
(auch neben Chlor)

Chlorine Dioxide
(also in the presence
of Chlorine)

Tablet Reagent

Anleitung zur Bestimmung von Chlordioxid

CHECKIT®Disc

Messbereich

Bestell-Nr.

Chlordioxid

0,01 - 0,2 mg/l ClO₂

14 63 30

Genauigkeit:

± 5 pH vom Messbereichsendwert

Tabletten

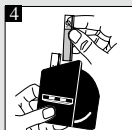
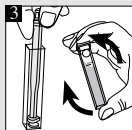
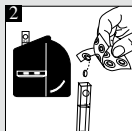
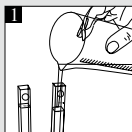
DPD No. 1

Bestell-Nr. per 100 Stück

51 10 60

Chlordioxid (DPD No. 1-Tablette)

- 1 Beide Küvetten mit der Probe bis zur 10 ml-Marke füllen.
- 2 Eine Küvette ohne Deckel als Blindprobe in die linke Kammer des Comparators stellen.
- 3 In die andere Küvette eine DPD No.1-Tablette zugeben. Die Tablette zerdrücken, Küvette verschließen. Tabletten durch Umschwenken auflösen.
- 4 Deckel entfernen. Die zweite Küvette in die rechte Kammer des Comparators stellen. Comparator schräg halten, damit genügend Tagesnordlicht von oben in die Küvette fällt. Die Spiegeleinheit nutzt die Durchsicht durch die gesamte Küvettenlänge.
- 5 Nach dem Abgleich mit der CHECKIT®Disc wird das Ergebnis in mg/l ClO₂ abgelesen.



Anleitung zur Bestimmung von Chlordioxid (neben Chlor)

CHECKIT®Disc

Chlordioxid

Messbereich

0,01 - 0,2 mg/l ClO₂

Bestell-Nr.

14 63 30

Genauigkeit:

± 5 pH vom Messbereichsendwert

Tabletten

DPD No. 1

Glycine

Bestell-Nr. per 100 Stück

51 10 60

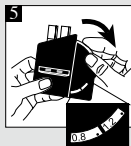
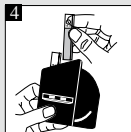
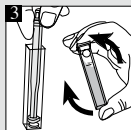
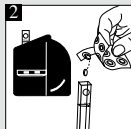
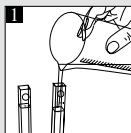
50 21 70

Chlordioxid (DPD No. 1-Tablette / Glycine)

- 1 Beide Küvetten mit der Probe bis zur 10 ml-Marke füllen.
- 2 Eine Küvette ohne Deckel als Blindprobe in die linke Kammer des Comparators stellen. In die andere Küvette eine DPD Glycine-Tablette geben.
- 3 Die Tablette mit Rührstab zerdrücken. Danach eine DPD No. 1-Tablette zugeben. Die Tablette zerdrücken, Küvette verschließen. Tabletten durch Umschwenken auflösen.
- 4 Deckel entfernen. Die zweite Küvette in die rechte Kammer des Comparators stellen. Comparator schräg halten, damit genügend Tagesnordlicht von oben in die Küvette fällt. Die Spiegeleinheit nutzt die Durchsicht durch die gesamte Küvettenlänge.
- 5 Nach dem Abgleich mit der CHECKIT®Disc wird das Ergebnis in mg/l ClO₂ (Ablesung A) abgelesen.

Anmerkung:

Zur Bestimmung des Gesamtchlors wird eine Probe nur mit einer DPD No.1-Tablette versetzt und das Ergebnis wie oben beschrieben ermittelt (Ablesung B). Mit 4 fortfahren. Die Differenz Ablesung B-A, geteilt durch 1,9, ergibt den Gehalt an Gesamtchlor in mg/l Cl₂.



Instructions for the determination of Chlorine Dioxide

CHECKIT®Disc

Chlorine Dioxide

Measurement Range Order Code

0,01 - 0,2 mg/l ClO₂ 14 63 30

Accuracy:

± 5 pH full scale

Tablets

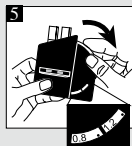
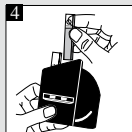
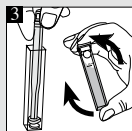
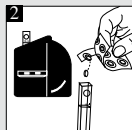
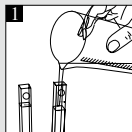
DPD No. 1

Order Code (per 100 pcs)

51 10 60

Chlorine Dioxide (DPD No. 1-Tablette)

- 1 Fill both cells to the 10 ml mark.
- 2 Place one cell without lid in the left-hand compartment of the comparator as a blank.
- 3 Add one DPD-No. 1-tablet. Crush the tablet, close the cell with a lid. Swirl it until the tablet is dissolved.
- 4 Remove the lid. Place this second cell in the right-hand compartment of the comparator.
Keep the comparator diagonally so that enough north day light enters the cuvette. The mirror unit makes use of the view through the entire length of the cuvette.
- 5 Match the two colour fields against north day light and read off the result as mg/l ClO₂.



Instructions for the determination of Chlorine Dioxide (in the presence of Chlorine)

CHECKIT®Disc

Chlorine Dioxide

Measurement Range Order Code

0,01 - 0,2 mg/l ClO₂ 14 63 30

Accuracy:

± 5 pH full scale

Tablets

DPD No. 1

Glycine

Order Code (per 100 pcs)

51 10 60

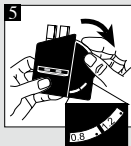
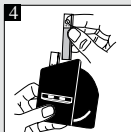
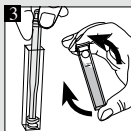
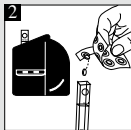
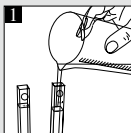
50 21 70

Chlorine Dioxide (DPD No. 1-Tablette / Glycine)

- 1 Fill both cells to the 10 ml mark.
- 2 Place one cell without lid in the left-hand compartment of the comparator as a blank. Add one DPD Glycine-tablet to the other cell.
- 3 Crush the tablet. Afterwards add one DPD-No. 1-tablet. Crush the tablet, close the cell with a lid. Swirl it until the tablet is dissolved.
- 4 Remove the lid. Place this second cell in the right-hand compartment of the comparator. Keep the comparator diagonally so that enough north day light enters the cuvette. The mirror unit makes use of the view through the entire length of the cuvette.
- 5 Match the two colour fields against north day light and read off the result as mg/l ClO₂ (reading A).

Note:

Add only one DPD No. 1-tablet to the sample for determination of Total Chlorine and continue as described above (Reading B). The difference of the reading B-A, divided by 1.9, shows the result of Total Chlorine as mg/l Cl₂.



Mode d'emploi pour la détermination du Dioxyde de chlore

CHECKIT®Disc

Plage de mesure

Référence de commande

Dioxyde de chlore

0,01 - 0,2 mg/l ClO₂

14 63 30

Precision de la mesure:

± 5 pH de valeur plafond de la plage de mesure

Pastilles

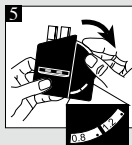
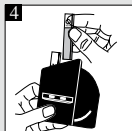
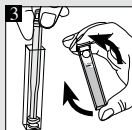
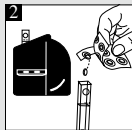
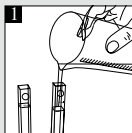
Référence de commande pour 100 pastilles

DPD No. 1

51 10 60

Dioxyde de chlore (DPD No. 1-pastille)

- 1 Remplir les deux cuves avec l'échantillon jusqu'à la marque 10 ml.
- 2 Placer une cuve sans son couvercle dans la chambre de mesure de gauche du comparateur (solution témoin).
- 3 Ajouter une pastille DPD No.1 et écraser la pastille. Fermer la cuvette avec son couvercle. Dissoudre la pastille en agitant la cuvette.
- 4 Enlever le couvercle. Placer celle-ci dans la chambre de mesure de droite. Tenir le comparateur penché de façon à laisser pénétrer suffisamment de lumière du jour dans la cuvette. Le miroir utilise la transparence de la cuvette sur toute sa longueur.
- 5 Faire concorder la couleur obtenue avec le CHECKIT®Disc et lire le résultat en mg/l ClO₂.



Mode d'emploi pour la détermination du Dioxyde de chlore (en présence de chlore)

CHECKIT®Disc	Plage de mesure	Référence de commande
--------------	-----------------	-----------------------

Dioxyde de chlore	0,01 - 0,2 mg/l ClO_2	14 63 30
-------------------	--------------------------------	----------

Precision de la mesure: ± 5 pH de valeur plafond de la plage de mesure

Pastilles	Référence de commande pour 100 pastilles
-----------	--

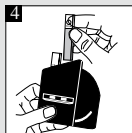
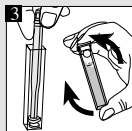
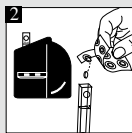
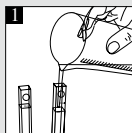
DPD No. 1	51 10 60
Glycine	50 21 70

Dioxyde de chlore (DPD No. 1- / Glycine-pastille)

- 1 Remplir les deux cuves avec l'échantillon jusqu'à la marque 10 ml.
- 2 Placer une cuve sans son couvercle dans la chambre de mesure de gauche du comparateur (solution témoin). Ajouter une pastille de DPD Glycine dans l'autre cuve.
- 3 Ecraser la pastille. Puis ajouter une pastille DPD No.1 et écraser la pastille. Fermer la cuvette avec son couvercle. Dissoudre la pastille en agitant la cuvette.
- 4 Enlever le couvercle. Placer celle-ci dans la chambre de mesure de droite. Tenir le comparateur penché de façon à laisser pénétrer suffisamment de lumière du jour dans la cuvette. Le miroir utilise la transparence de la cuvette sur toute sa longueur.
- 5 Faire concorder la couleur obtenue avec le CHECKIT®Disc et lire le résultat en mg/l ClO_2 .

Remarque:

Pour la mesure du chlore total, ajouter seulement une pastille de DPD N°1 dans l'échantillon et lire le résultat comme décrit ci-dessus (lecture B). La différence B - A, divisée par 1,9 correspond au taux de chlore total en mg/l Cl_2 .



Istruzioni per la determinazione di Biossido di cloro

CHECKIT®Disc

Biossido di cloro

Campo di misurazione Cod. art.

0,01 - 0,2 mg/l ClO_2 14 63 30

Precisione di dischi:

+/- 5 pH del valore finale.

Compresse

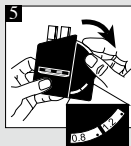
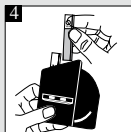
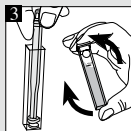
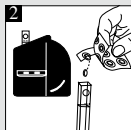
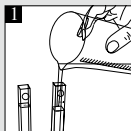
DPD No. 1

Cod. art. ogni 100 pezzi

51 10 60

Biossido di cloro (DPD No. 1-compresse)

- 1 Riempire le due cuvette con il campione fino alla tacca 10 ml.
- 2 Porre una cuvetta senza il coperchio come bianco nella camera a sinistra del comparatore.
- 3 Introdurre una compressa DPD No.1 e frantumarla con un agitatore pulito. Chiudere con il coperchio.
- 4 Rimuovere il coperchio. Far sciogliere la compressa capovolgendo la cuvetta che poi verrà inserita nella camera a destra. Mantenga il comparatore diagonalmente in modo che abbastanza luce del giorno entra nella cuvetta. L'unità dello specchio usa la vista dall'intera lunghezza della cuvetta.
- 5 In seguito alla compensazione con il CHECKIT®Disc il risultato viene letto come mg/l ClO_2 .



Istruzioni per la determinazione di Biossido di cloro (in presenza di cloro)

CHECKIT®Disc

Biossido di cloro

Campo di misurazione Cod. art.

0,01 - 0,2 mg/l ClO_2 14 63 30

Precisione di dischi:

+/- 5 pH del valore finale.

Compresse

DPD No. 1

Glycine

Cod. art. ogni 100 pezzi

51 10 60

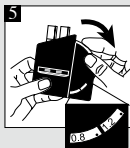
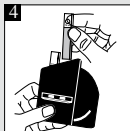
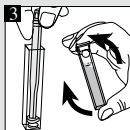
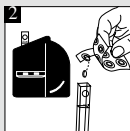
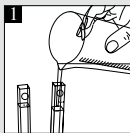
50 21 70

Biossido di cloro (DPD No. 1- / Glycine-compresse)

- 1 Riempire le due cuvette con il campione fino alla tacca 10 ml.
- 2 Porre una cuvetta senza il coperchio come bianco nella camera a sinistra del comparatore. Introdurre una compressa DPD Glycine nell'altra cuvetta.
- 3 Frantumarla con un agitatore pulito. Introdurre una compressa DPD No.1 e frantumarla con un agitatore pulito. Chiudere con il coperchio.
- 4 Rimuova il coperchio. Far sciogliere la compressa capovolgendo la cuvetta che poi verrà inserita nella camera a destra. Mantenga il comparatore diagonalmente in modo che abbastanza luce del giorno entra nella cuvetta. L'unità dello specchio usa la vista dall'intera lunghezza della cuvetta.
- 5 In seguito alla compensazione con il CHECKIT®Disc il risultato viene letto come mg/l ClO_2 .

Nota:

Per la determinazione di cloro totale aggiungere una pastiglia DPD No.1 al campione ed effettuare la misurazione come descritto precedentemente (lettura B). Deduca il risultato di lettura no. A della lettura no.B. Dividere la differenza (B-A) per 1.9. Cio el il valore di cloro total in mg/l Cl_2 .



Instrucciones para la determinación de Dióxido de cloro

CHECKIT®Disc

Campo de medición

Número de pedido

Dióxido de cloro

0,01 - 0,2 mg/l Cl₂

14 63 30

Precisión de discos:

± 5 pH del valor final

Tabletas

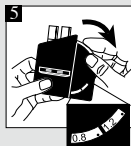
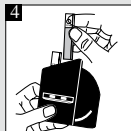
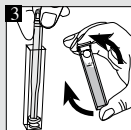
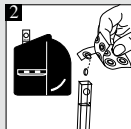
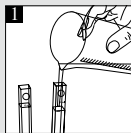
Número de pedido

DPD No. 1

51 10 60

Dióxido de cloro (DPD No. 1-tableta)

- 1 Llenar ambas cubetas con la prueba hasta la marca de 10 ml.
- 2 Colocar una cubeta como ensayo en blanco en el compartimento izquierdo del Comparador.
- 3 Para la determinación, añadir directamente del papel de aluminio, una tableta DPD No. 1 en el compartimento de afuera. Machacarla con una varilla. Cerrarla con su tapa y moverlos para disolver las tabletas.
- 4 Quite la tapa. Colocar esta cubeta en el compartimento derecho. Guarde el comparador diagonalmente de modo que bastante luz diurna entre en la cubeta. La unidad del espejo hace uso la visión por la longitud entera de la cubeta.
- 5 Una vez realizada la igualación del color producido en la cubeta con el CHECKIT®Disc, leer el resultado de mg/l ClO₂.



Instrucciones para la determinación de Dióxido de cloro (en presencia de cloro)

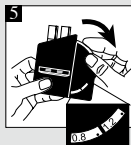
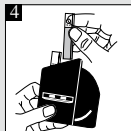
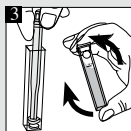
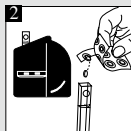
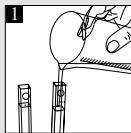
CHECKIT®Disc	Campo de medición	Número de pedido
Dióxido de cloro	0,01 - 0,2 mg/l Cl ₂	14 63 30
Precisión de discos:	± 5 pH del valor final	
Tabletas		Número de pedido
DPD No. 1		51 10 60
Glycine		50 21 70

Dióxido de cloro (DPD No. 1- / Glycine-tableta)

- 1 Llenar ambas cubetas con la prueba hasta la marca de 10 ml.
- 2 Colocar una cubeta como ensayo en blanco en el compartimento izquierdo del Comparador. Añadir a la segunda cubeta una tableta DPD Glycine. Machacarla con una varilla.
- 3 Para la determinación, añadir directamente del papel de aluminio, una tableta DPD No. 1 en el compartimento de afuera. Machacarla con una varilla. Cerrarla con su tapa y moverlos para disolver las tabletas.
- 4 Quite la tapa. Colocar esta cubeta en el compartimento derecho. Guarde el comparador diagonalmente de modo que bastante luz diurna entre en la cubeta. La unidad del espejo hace uso la visión por la longitud entera de la cubeta.
- 5 Una vez realizada la igualación del color producido en la cubeta con el CHECKIT®Disc, leer el resultado de mg/l Cl₂.

Nota:

Para hacer la determinación de cloro total agregue por favor una tableta DPD no. 1 al la muestra y efectuar la misura segun lo descritto arriba (lectura B). Deduzca el resultado de lectura no. A de la lectura no.B y divida la diferencia (B-A) por 1.9. Éste es el valor de cloro total en mg/l Cl₂.



Other available tests Range

Aluminium	0 - 0.3 mg/l Al
Ammonia	0 - 1 mg/l N
Bromine	0 - 5 mg/l Br
Chlorine	0 - 1 mg/l Cl ₂
free, combined,	0.1 - 2 mg/l Cl ₂
total	0 - 4 mg/l Cl ₂
Chlorine*	0.02 - 0.3 mg/l Cl ₂
Chlorine Dioxide*	0.01 - 0.2 mg/l ClO ₂
Chlorine HR (total)	10 - 300 mg/l Cl ₂
Copper (Cu²⁺)	0 - 1 mg/l Cu
Copper LR*	0 - 1 mg/l Cu
(free + total)	
Copper HR	0 - 5 mg/l Cu
(free + total)	
DEHA	0 - 0,5 mg/l DEHA
Fluoride	0.2 - 2 mg/l F
Iron LR	0.05 - 1 mg/l Fe
Iron HR	1 - 10 mg/l Fe

Other available tests Range

Manganese LR	0.1 - 0.7 mg/l Mn
Manganese VLR*	0.02 - 0.2 mg/l Mn
Molybdate	0 - 100 mg/l MoO ₄
Nitrate LR	0 - 1 mg/l N
Nitrate HR	10 - 100 mg/l NO ₃
Nitrite LR	0 - 0.5 mg/l N
Ozone (DPD)	0 - 0.7 mg/l O ₃
pH	5.2 - 6.8 pH,
	6.0 - 7.6 pH,
	6.5 - 8.4 pH,
	4 - 10 pH
Phosphate LR	0 - 4 mg/l PO ₄
Phosphate HR	0 - 80 mg/l PO ₄
Silica LR	0.25 - 4 mg/l SiO ₂
Silica VLR*	0 - 1 mg/l SiO ₂
Sulfite LR	0.5 - 10 mg/l SO ₃ ²⁻
Zinc	0 - 1 mg/l Zn

*Only with CHECKIT®Comparator D55 with mirror optics