

Instrucciones para la determinación de Cobre LR con sobres de polvos libre

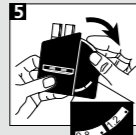
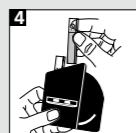
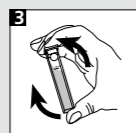
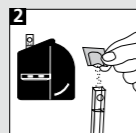
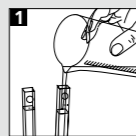
CHECKIT®Disc	Campo de medición	Número de pedido
COPPER LR PP	0 - 1 mg/l Cu	14 64 41

Precisión de discos: ± 5 % del valor final

Reactivos (por 100 tests)	Número de pedido
Vario Cu1 F10	51 03 00

Cobre LR PP libre (Vario Cu1 F10)

- 1 Llenar ambas cubetas con la prueba hasta la marca de 10 ml.
- 2 Colocar una cubeta como ensayo en blanco en el compartimento izquierdo del Comparador. Añadir a la segunda cubeta un sobre de polvo Vario Cu1 F10.
- 3 Cerrarla con su tapa y moverlos para disolver.
- 4 Colocar esta cubeta en el compartimento derecho.
- 5 Guardar el comparador diagonalmente de modo que bastante luz diurna entre en la cubeta. La unidad del espejo hace uso de la visión por la longitud entera de la cubeta. Una vez realizada la igualación del color producido en la cubeta con el CHECKIT®Disc, leer el resultado de mg/l Cu.



Instrucciones para la determinación de Cobre LR con sobres de polvos libre

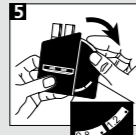
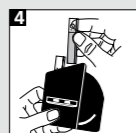
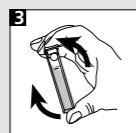
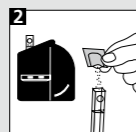
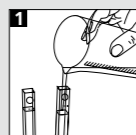
CHECKIT®Disc	Campo de medición	Número de pedido
COPPER LR PP	0 - 1 mg/l Cu	14 64 41

Precisión de discos: ± 5 % del valor final

Reactivos (por 100 tests)	Número de pedido
Vario Cu1 F10	51 03 00

Cobre LR PP libre (Vario Cu1 F10)

- 1 Llenar ambas cubetas con la prueba hasta la marca de 10 ml.
- 2 Colocar una cubeta como ensayo en blanco en el compartimento izquierdo del Comparador. Añadir a la segunda cubeta un sobre de polvo Vario Cu1 F10.
- 3 Cerrarla con su tapa y moverlos para disolver.
- 4 Colocar esta cubeta en el compartimento derecho.
- 5 Guardar el comparador diagonalmente de modo que bastante luz diurna entre en la cubeta. La unidad del espejo hace uso de la visión por la longitud entera de la cubeta. Una vez realizada la igualación del color producido en la cubeta con el CHECKIT®Disc, leer el resultado de mg/l Cu.



D Wichtig:

Die Küvette muss mit dem Punkt zum Betrachter im Messschacht positioniert werden. Um höchste Genauigkeit zu gewährleisten, Farbabgleich immer gegen Tagesnordlicht durchführen. Küvetten müssen nach jeder Bestimmung gründlich gespült werden. CHECKIT®Disc lichtgeschützt / dunkel lagern.

GB Important:

Place the cell facing the mark (point) in the compartment. It is essential to rinse the cells thoroughly after each test. To obtain maximum accuracy view and match colour against north day light always. Store CHECKIT®Disc in the dark.

F Important:

La cuve doit être positionnée de façon à ce que le point concorde avec le repère de la chambre de mesure. Pour assurer la plus grande exactitude, faire concorder la couleur avec le CHECKIT®Disc en tenant le comparateur face à la lumière. Les cuves doivent être bien nettoyées après chaque mesure. Stocker CHECKIT®Disc dans un endroit sombre.

I Importante:

La cuvetta deve essere posizionata nel pozzetto di misurazione con il punto verso l'osservatore. Per garantire la massima precisione eseguire sempre la compensazione del colore contro la luce del giorno. Le cuvette devono essere sempre lavate accuratamente in seguito ad ogni determinazione. Conservare CHECKIT®Disc oscuro.

E Importante:

Posicionar la cubeta en el compartimento de tal forma, que el punto se encuentre dirigido hacia el usuario. Para garantizar una exactitud máxima, realizar el ajuste cromático siempre con luz diurna. Las cubetas se deberán de limpiar y enjuagar minuciosamente después de cada determinación. Almacene CHECKIT®Disc oscuro.

D Wichtig:

Die Küvette muss mit dem Punkt zum Betrachter im Messschacht positioniert werden. Um höchste Genauigkeit zu gewährleisten, Farbabgleich immer gegen Tagesnordlicht durchführen. Küvetten müssen nach jeder Bestimmung gründlich gespült werden. CHECKIT®Disc lichtgeschützt / dunkel lagern.

GB Important:

Place the cell facing the mark (point) in the compartment. It is essential to rinse the cells thoroughly after each test. To obtain maximum accuracy view and match colour against north day light always. Store CHECKIT®Disc in the dark.

F Important:

La cuve doit être positionnée de façon à ce que le point concorde avec le repère de la chambre de mesure. Pour assurer la plus grande exactitude, faire concorder la couleur avec le CHECKIT®Disc en tenant le comparateur face à la lumière. Les cuves doivent être bien nettoyées après chaque mesure. Stocker CHECKIT®Disc dans un endroit sombre.

I Importante:

La cuvetta deve essere posizionata nel pozzetto di misurazione con il punto verso l'osservatore. Per garantire la massima precisione eseguire sempre la compensazione del colore contro la luce del giorno. Le cuvette devono essere sempre lavate accuratamente in seguito ad ogni determinazione. Conservare CHECKIT®Disc oscuro.

E Importante:

Posicionar la cubeta en el compartimento de tal forma, que el punto se encuentre dirigido hacia el usuario. Para garantizar una exactitud máxima, realizar el ajuste cromático siempre con luz diurna. Las cubetas se deberán de limpiar y enjuagar minuciosamente después de cada determinación. Almacene CHECKIT®Disc oscuro.

Other available tests Range

Aluminium	0 - 0.3 mg/l Al
Ammonia	0 - 1 mg/l N
Ammonia vario	0 - 0.5 mg/l N
Bromine	0.5 - 5 mmol/l
Chlorine	0 - 1 mg/l Cl ₂
free, combined,	0.1 - 2 mg/l Cl ₂
total	0 - 4 mg/l Cl ₂
Chlorine*	0.02 - 0.3 mg/l Cl ₂
Chlorine Dioxide*	0.01 - 0.2 mg/l ClO ₂
Chlorine HR (total)	10 - 300 mg/l Cl ₂
Chlor vario	0 - 3.5 mg/l Cl
Copper (Cu ²⁺)	0 - 1 mg/l Cu
COPPER LR* (free + total)	0 - 1 mg/l Cu
Copper HR (free + total)	0 - 1 mg/l Cu
COPPER LR vario* (free)	0 - 1 mg/l Cu
Copper HR vario (free)	0 - 1 mg/l Cu
DEHA	0 - 0.5 mg/l DEHA
Fluoride	0.2 - 2 mg/l F
Iron LR	0.05 - 1 mg/l Fe

Other available tests Range

Iron HR	1 - 10 mg/l Fe
Iron TPTZ	0 - 1.8 mg/l Fe
Manganese LR	0.1 - 0.7 mg/l Mn
Manganese VLR*	0.02 - 0.2 mg/l Mn
Molybdate	0 - 100 mg/l MoO ₄
Nitrate LR	0 - 1 mg/l N
Nitrate HR	10 - 100 mg/l NO ₃
Nitrite LR	0 - 0.5 mg/l N
Nitrite LR vario	0 - 0.3 mg/l N
Ozone (DPD)	0 - 0.7 mg/l O ₃
pH	5.2 - 6.8 pH, 6.0 - 7.6 pH, 6.5 - 8.4 pH, 4 - 10 pH
Phosphate LR	0 - 4 mg/l PO ₄
Phosphate HR	0 - 80 mg/l PO ₄
Phosphat vario	0 - 2.5 mg/l PO ₄
Säurekapazität Ks4.3	0.5 - 5 mmol/l
Silica LR	0.25 - 4 mg/l SiO ₂
Silica vario	0 - 100 mg/l SiO ₂
Silica VLR*	0 - 1 mg/l SiO ₂
Sulfite LR	0.5 - 10 mg/l SO ₃ ²⁻
Total Alkalinity	20-240 mg/l CaCO ₃
Zinc	0 - 1 mg/l Zn

*Only with CHECKIT®Comparator D55 with mirror optics

Update: www.tintometer.de
No.: 0038 00387151

Technical changes without notice
Printed in Germany 07/07

Other available tests Range

Aluminium	0 - 0.3 mg/l Al
Ammonia	0 - 1 mg/l N
Ammonia vario	0 - 0.5 mg/l N
Bromine	0.5 - 5 mmol/l
Chlorine	0 - 1 mg/l Cl ₂
free, combined,	0.1 - 2 mg/l Cl ₂
total	0 - 4 mg/l Cl ₂
Chlorine*	0.02 - 0.3 mg/l Cl ₂
Chlorine Dioxide*	0.01 - 0.2 mg/l ClO ₂
Chlorine HR (total)	10 - 300 mg/l Cl ₂
Chlor vario	0 - 3.5 mg/l Cl
Copper (Cu ²⁺)	0 - 1 mg/l Cu
COPPER LR* (free + total)	0 - 1 mg/l Cu
Copper HR (free + total)	0 - 1 mg/l Cu
COPPER LR vario* (free)	0 - 1 mg/l Cu
Copper HR vario (free)	0 - 1 mg/l Cu
DEHA	0 - 0.5 mg/l DEHA
Fluoride	0.2 - 2 mg/l F
Iron LR	0.05 - 1 mg/l Fe

Other available tests Range

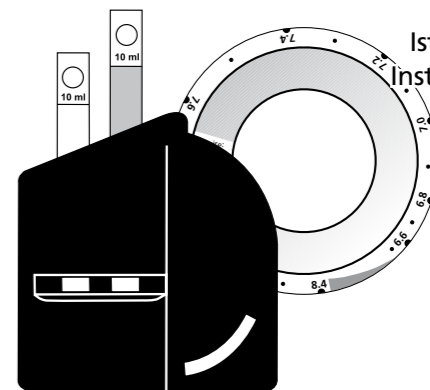
Iron HR	1 - 10 mg/l Fe
Iron TPTZ	0 - 1.8 mg/l Fe
Manganese LR	0.1 - 0.7 mg/l Mn
Manganese VLR*	0.02 - 0.2 mg/l Mn
Molybdate	0 - 100 mg/l MoO ₄
Nitrate LR	0 - 1 mg/l N
Nitrate HR	10 - 100 mg/l NO ₃
Nitrite LR	0 - 0.5 mg/l N
Nitrite LR vario	0 - 0.3 mg/l N
Ozone (DPD)	0 - 0.7 mg/l O ₃
pH	5.2 - 6.8 pH, 6.0 - 7.6 pH, 6.5 - 8.4 pH, 4 - 10 pH
Phosphate LR	0 - 4 mg/l PO ₄
Phosphate HR	0 - 80 mg/l PO ₄
Phosphat vario	0 - 2.5 mg/l PO ₄
Säurekapazität Ks4.3	0.5 - 5 mmol/l
Silica LR	0.25 - 4 mg/l SiO ₂
Silica vario	0 - 100 mg/l SiO ₂
Silica VLR*	0 - 1 mg/l SiO ₂
Sulfite LR	0.5 - 10 mg/l SO ₃ ²⁻
Total Alkalinity	20-240 mg/l CaCO ₃
Zinc	0 - 1 mg/l Zn

*Only with CHECKIT®Comparator D55 with mirror optics

Update: www.tintometer.de
No.: 0038 00387151

Technical changes without notice
Printed in Germany 07/07

CHECKIT®Comparator D 55

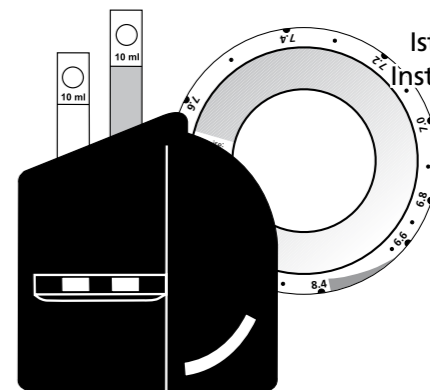


Bedienungsanleitung **DE**
Instruction Manual **GB**
Mode d'emploi **FR**
Istruzioni per l'uso **I**
Instrucciones de uso **ES**

Kupfer LR
Copper LR
Cuivre LR
Rame LR
Cobre LR

Powder Reagent

CHECKIT®Comparator D 55



Bedienungsanleitung **DE**
Instruction Manual **GB**
Mode d'emploi **FR**
Istruzioni per l'uso **I**
Instrucciones de uso **ES**

Kupfer LR
Copper LR
Cuivre LR
Rame LR
Cobre LR

Powder Reagent

Anleitung zur Bestimmung von Kupfer LR mit Vario Pulverpäckchen

frei

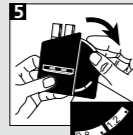
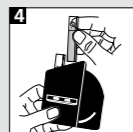
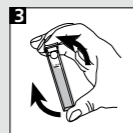
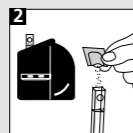
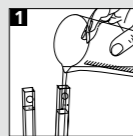
CHECKIT®Disc Messbereich Bestell-Nr.
COPPER LR PP 0 - 1 mg/l Cu 14 64 41

Genauigkeit: ± 5 % vom Messbereichsendwert

Reagenz Bestell-Nr. per 100 Stück
Vario Cu1 F10 51 03 00

Kupfer LR PP frei (Vario Cu1 F10)

- 1 Beide Küvetten mit der Probe bis zur 10 ml-Marke füllen.
- 2 Eine Küvette als Blindprobe in die linke Kammer des Comparators stellen. In die andere Küvette ein Vario Cu1 F10 Pulverpäckchen geben.
- 3 Küvette verschließen, durch Umschwenken auflösen.
- 4 Deckel abnehmen. Die zweite Küvette in die rechte Kammer des Comparators stellen.
- 5 Comparator schräg halten, damit genügend Tageslicht von oben in die Küvette fällt. Die Spiegeleinheit nutzt die Durchsicht durch die gesamte Küvettenlänge. Nach dem Abgleich mit der CHECKIT®Disc wird das Ergebnis in mg/l Cu abgelesen.



Anleitung zur Bestimmung von Kupfer LR mit Vario Pulverpäckchen

frei

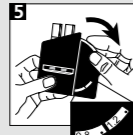
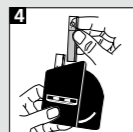
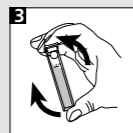
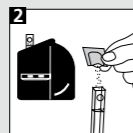
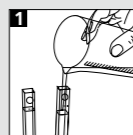
CHECKIT®Disc Messbereich Bestell-Nr.
COPPER LR PP 0 - 1 mg/l Cu 14 64 41

Genauigkeit: ± 5 % vom Messbereichsendwert

Reagenz Bestell-Nr. per 100 Stück
Vario Cu1 F10 51 03 00

Kupfer LR PP frei (Vario Cu1 F10)

- 1 Beide Küvetten mit der Probe bis zur 10 ml-Marke füllen.
- 2 Eine Küvette als Blindprobe in die linke Kammer des Comparators stellen. In die andere Küvette ein Vario Cu1 F10 Pulverpäckchen geben.
- 3 Küvette verschließen, durch Umschwenken auflösen.
- 4 Deckel abnehmen. Die zweite Küvette in die rechte Kammer des Comparators stellen.
- 5 Comparator schräg halten, damit genügend Tageslicht von oben in die Küvette fällt. Die Spiegeleinheit nutzt die Durchsicht durch die gesamte Küvettenlänge. Nach dem Abgleich mit der CHECKIT®Disc wird das Ergebnis in mg/l Cu abgelesen.



Instructions for the determination of Copper LR with Vario Powder Packs

free

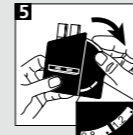
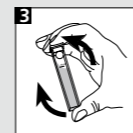
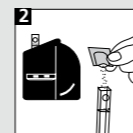
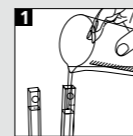
CHECKIT®Disc Measurement Range Order Code
COPPER LR PP 0 - 1 mg/l Cu 14 64 41

Accuracy: ± 5 % full scale

Reagent Order Code (per 100 pcs)
Vario Cu1 F10 51 03 00

Copper LR free (Vario Cu1 F10)

- 1 Fill both cells to the 10 ml mark.
- 2 Place one cell in the left-hand compartment of the comparator as a blank. Add one Vario Cu1 F10 Powder Pack to the other cell.
- 3 Close the cell with a lid. Swirl it gently.
- 4 Remove the lid. Place this second cell in the right-hand compartment of the comparator.
- 5 Hold the comparator at an angle so that enough north daylight goes through the cell. The mirror unit makes use of the view through the entire length of the cell. Read off the result as mg/l Cu.



Instructions for the determination of Copper LR with Vario Powder Packs

free

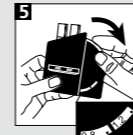
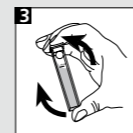
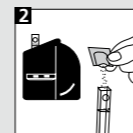
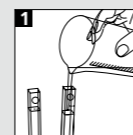
CHECKIT®Disc Measurement Range Order Code
COPPER LR PP 0 - 1 mg/l Cu 14 64 41

Accuracy: ± 5 % full scale

Reagent Order Code (per 100 pcs)
Vario Cu1 F10 51 03 00

Copper LR free (Vario Cu1 F10)

- 1 Fill both cells to the 10 ml mark.
- 2 Place one cell in the left-hand compartment of the comparator as a blank. Add one Vario Cu1 F10 Powder Pack to the other cell.
- 3 Close the cell with a lid. Swirl it gently.
- 4 Remove the lid. Place this second cell in the right-hand compartment of the comparator.
- 5 Hold the comparator at an angle so that enough north daylight goes through the cell. The mirror unit makes use of the view through the entire length of the cell. Read off the result as mg/l Cu.



Mode d'emploi pour la détermination du Cuivre LR avec des sachets de poudre

libre

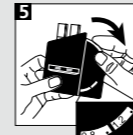
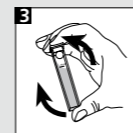
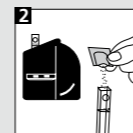
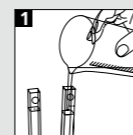
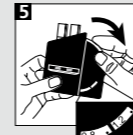
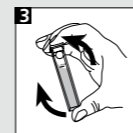
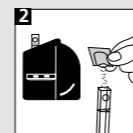
CHECKIT®Disc Plage de mesure Référence de commande
COPPER LR PP 0 - 1 mg/l Cu 14 64 41

Precision de la mesure: ± 5 % de valeur plafond de la plage de mesure

Réactifs (pour 100 tests) Référence de commande
Vario Cu1 F10 51 03 00

Cuivre LR PP libre (Vario Cu1 F10)

- 1 Remplir les deux cuves avec l'échantillon jusqu'à la marque 10 ml.
- 2 Placer une cuve dans la chambre de mesure de gauche du comparateur (solution témoin). Ajouter un sachet de poudre de Vario Cu1 F10 dans l'autre cuve.
- 3 Fermer la cuvette avec son couvercle. Dissoudre en agitant les cuves.
- 4 Enlever le couvercle. Placer celle-ci dans la chambre de mesure de droite.
- 5 Tenir le comparateur penché de façon à laisser pénétrer suffisamment de lumière du jour dans la cuve. Le miroir utilise la transparence de la cuve sur toute sa longueur. Faire concorder la couleur obtenue avec le CHECKIT®Disc et lire le résultat en mg/l Cu.



Mode d'emploi pour la détermination du Cuivre LR avec des sachets de poudre

libre

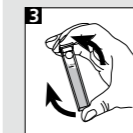
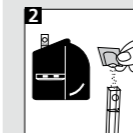
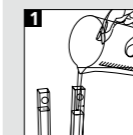
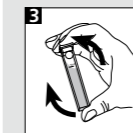
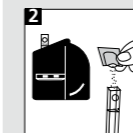
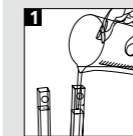
CHECKIT®Disc Plage de mesure Référence de commande
COPPER LR PP 0 - 1 mg/l Cu 14 64 41

Precision de la mesure: ± 5 % de valeur plafond de la plage de mesure

Réactifs (pour 100 tests) Référence de commande
Vario Cu1 F10 51 03 00

Cuivre LR PP libre (Vario Cu1 F10)

- 1 Remplir les deux cuves avec l'échantillon jusqu'à la marque 10 ml.
- 2 Placer une cuve dans la chambre de mesure de gauche du comparateur (solution témoin). Ajouter un sachet de poudre de Vario Cu1 F10 dans l'autre cuve.
- 3 Fermer la cuvette avec son couvercle. Dissoudre en agitant les cuves.
- 4 Enlever le couvercle. Placer celle-ci dans la chambre de mesure de droite.
- 5 Tenir le comparateur penché de façon à laisser pénétrer suffisamment de lumière du jour dans la cuve. Le miroir utilise la transparence de la cuve sur toute sa longueur. Faire concorder la couleur obtenue avec le CHECKIT®Disc et lire le résultat en mg/l Cu.



Istruzioni per la determinazione di Rame LR con bustina polvere

libero

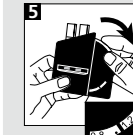
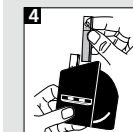
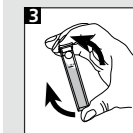
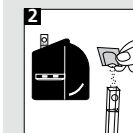
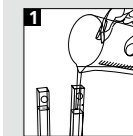
CHECKIT®Disc Campo di misurazione Cod. art.
COPPER LR PP 0 - 1 mg/l Cu 14 64 41

Precisione di dischi: +/- 5% del valore finale.

Reagenti (per 100 test) Cod. art.
Vario Cu1 F10 51 03 00

Rame LR PP libero (Vario Cu1 F10)

- 1 Riempire le due cuvette con il campione fino alla tacca 10 ml.
- 2 Porre una cuvetta come bianco nella camera a sinistra del comparatore. Introdurre una bustina polvere Vario Cu1 F10 nell'altra cuvetta.
- 3 Frantumarla con un agitatore pulito. Chiudere con il coperchio.
- 4 Rimuovere il coperchio. Farsciogliere la compressa capovolgendo la cuvetta che poi verrà inserita nella camera a destra.
- 5 Mantenga il comparatore diagonalmente in modo che abbastanza luce del giorno entra nella cuvetta. L'unità dello specchio usa la vista dall'intera lunghezza della cuvetta. In seguito alla compensazione con CHECKIT®Disc il risultato viene letto come mg/l Cu.



Istruzioni per la determinazione di Rame LR con bustina polvere

libero

CHECKIT®Disc Campo di misurazione Cod. art.
COPPER LR PP 0 - 1 mg/l Cu 14 64 41

Precisione di dischi: +/- 5% del valore finale.

Reagenti (per 100 test) Cod. art.
Vario Cu1 F10 51 03 00

Rame LR PP libero (Vario Cu1 F10)

- 1 Riempire le due cuvette con il campione fino alla tacca 10 ml.
- 2 Porre una cuvetta come bianco nella camera a sinistra del comparatore. Introdurre una bustina polvere Vario Cu1 F10 nell'altra cuvetta.
- 3 Frantumarla con un agitatore pulito. Chiudere con il coperchio.
- 4 Rimuovere il coperchio. Farsciogliere la compressa capovolgendo la cuvetta che poi verrà inserita nella camera a destra.
- 5 Mantenga il comparatore diagonalmente in modo che abbastanza luce del giorno entra nella cuvetta. L'unità dello specchio usa la vista dall'intera lunghezza della cuvetta. In seguito alla compensazione con CHECKIT®Disc il risultato viene letto come mg/l Cu.

