

CHECKIT[®] Comparator

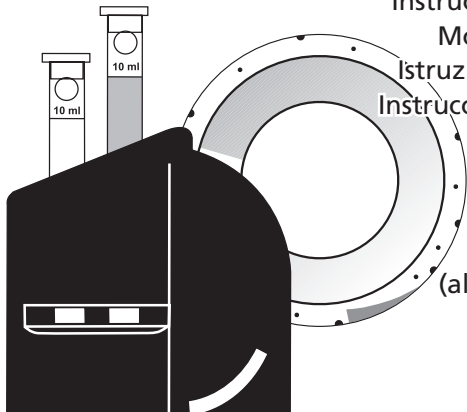
Bedienungsanleitung **DE**

Instruction Manual **GB**

Mode d'emploi **FR**

Istruzioni per l'uso **IT**

Instrucciones de uso **ES**



Ozon
Ozone

(also in the presence
of chlorine)

Tablet Reagent

Anleitung zur Bestimmung von Ozon (DPD)

CHECKIT®Disc

Ozon (DPD)

Messbereich

0 - 1,0 mg/l O₃

Bestell-Nr.

14 62 70

Genauigkeit:

± 5 % vom Messbereichsendwert

Tabletten

DPD No. 4

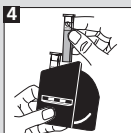
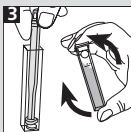
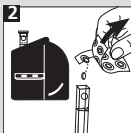
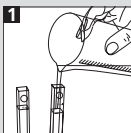
Bestell-Nr. per 100 Stück

51 12 20 BT

Ozon (DPD No. 4-Tablette)

- 1 Beide Küvetten mit der Probe bis zur 10 ml-Marke füllen.
- 2 Eine Küvette als Blindprobe in die linke Kammer des Comparators stellen. In die andere Küvette eine DPD No. 4-Tablette geben.
- 3 Die Tablette mit Rührstab zerdrücken, Küvette mit dem Deckel verschließen. Tablette durch Umschwenken vollständig auflösen.
- 4 Die zweite Küvette in die rechte Kammer des Comparators stellen.
- 5 Nach dem Abgleich mit der CHECKIT®Disc wird das Ergebnis in mg/l O₃ abgelesen.

Wasser in der Comparatorscheibe: Öffnen, mit dest. Wasser reinigen, trocknen, schließen.



Anleitung zur Bestimmung von Ozon neben Chlor

CHECKIT®Disc

Ozon (DPD)

Messbereich

0 - 1,0 mg/l O₃

Bestell-Nr.

14 62 70

Genauigkeit:

± 5 % vom Messbereichsendwert

Tabletten

DPD No. 4

DPD Glycine

Bestell-Nr. per 100 Stück

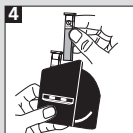
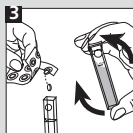
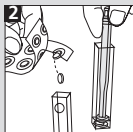
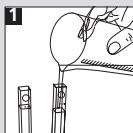
51 12 20 BT

51 21 70

Ozon (DPD No. 4 / DPD Glycine-Tablette)

- 1 Beide Küvetten mit der Probe bis zur 10 ml-Marke füllen.
- 2 In eine Küvette eine DPD Glycine-Tablette geben und mit einem Rührstab zerdrücken.
- 3 In beide Küvetten jeweils eine DPD No. 4-Tablette geben. Die Tabletten mit Rührstab zerdrücken, Küvetten mit dem Deckel verschließen. Tabletten durch Umschwenken auflösen.
- 4 Die Küvette mit der DPD Glycine- und DPD No. 4-Tablette in die linke Kammer des Comparators stellen. Die Küvette, die **nur** die DPD No. 4-Tablette enthält, in die rechte Kammer des Comparators stellen.
- 5 Nach dem Abgleich mit der CHECKIT®Disc wird das Ergebnis in mg/l O₃ abgelesen.

Wasser in der Comparatorscheibe: Öffnen, mit dest. Wasser reinigen, trocknen, schließen.



Instructions for the determination of ozone (DPD)

CHECKIT®Disc

Ozone (DPD)

Measurement Range Order Code

0 - 1,0 mg/l O₃ 14 62 70

Accuracy:

± 5 % full scale

Tablets

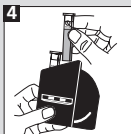
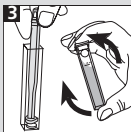
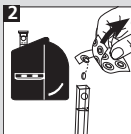
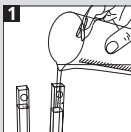
DPD No. 4

Order Code (per 100 pcs)

51 12 20 BT

Ozone (DPD) (DPD No. 4 -tablet)

- 1 Fill both cells to the 10 ml mark.
 - 2 Place one cell in the left-hand compartment of the comparator as a blank. Add a DPD No. 4 -tablet to the other cell.
 - 3 Crush the tablet, close the cell with a lid. Swirl it until the tablet is dissolved.
 - 4 Place this second cell in the right-hand compartment of the comparator.
 - 5 Match the two colour fields against north day light and read off the result as mg/l O₃.
- When comparator disc holds water: open, clean it with distilled water, dry, and close it.



Instructions for the determination of ozone in the presence of chlorine

CHECKIT®Disc

Ozone (DPD)

Measurement Range Order Code

0 - 1,0 mg/l O₃

14 62 70

Accuracy:

± 5 % full scale

Tablets

DPD No. 4

DPD Glycine

Order Code (per 100 pcs)

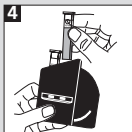
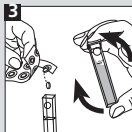
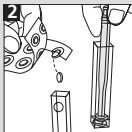
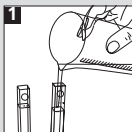
51 12 20 BT

51 21 70

Ozone in the presence of chlorine (DPD No. 4 / DPD Glycine-tablet)

- 1 Fill both cells to the 10 ml mark.
- 2 Add a DPD Glycine-tablet to one of the cells.
Crush the tablet.
- 3 Afterwards add a DPD No. 4 -tablet to each cell.
Crush the tablets, close the cells with a lid. Swirl until the tablets have dissolved.
- 4 Place the cell with the DPD Glycine tablet **and** the DPD No. 4 -tablet in the left-hand compartment of the comparator. Place the cell which contains **only** the DPD No.4 -tablet in the right compartment of the comparator.
- 5 Match the two colour fields against north day light and read off the result as mg/l O₃.

When comparator disc holds water: open, clean it with distilled water, dry, and close it.



Mode d'emploi pour la détermination du Ozone (DPD)

CHECKIT®Disc

Plage de mesure

Référence de commande

Ozone (DPD)

0 - 1,0 mg/l O₃

14 62 70

Precision de la mesure:

± 5 % de valeur plafond de la plage de mesure

Pastilles

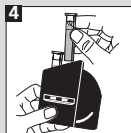
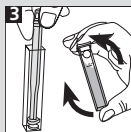
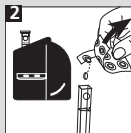
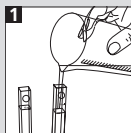
Référence de commande pour 100 pastilles
51 12 20 BT

DPD No. 4

Ozone (DPD No. 4 -pastille)

- 1 Remplir les deux cuves avec l'échantillon jusqu'à la marque 10 ml.
- 2 Placer une cuve dans la chambre de mesure de gauche du comparateur (solution témoin). Ajouter une pastille de DPD No. 4 dans l'autre cuve.
- 3 Ecraser la pastille. Fermer la cuvette avec son couvercle. Dissoudre la pastille en agitant la cuvette.
- 4 Placer celle-ci dans la chambre de mesure de droite.
- 5 Faire concorder la couleur obtenue avec le CHECKIT®Disc et lire le résultat mg/l O₃.

L'eau dans le disque comparateur: ouvrir, nettoyer avec l'eau distillée, sécher, fermer.



Mode d'emploi pour la détermination du Ozone en présence de chlore

CHECKIT®Disc

Plage de mesure

Référence de commande

Ozone (DPD)

0 - 1,0 mg/l O₃

14 62 70

Precision de la mesure:

± 5 % de valeur plafond de la plage de mesure

Pastilles

Référence de commande pour 100 pastilles

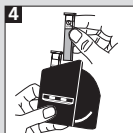
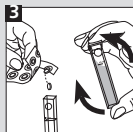
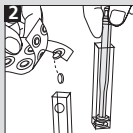
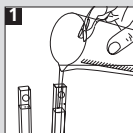
DPD No. 4

51 12 20 BT

Ozone (DPD No. 4 / DPD Glycine-pastille)

- 1 Remplir les deux cuves avec l'échantillon jusqu'à la marque 10 ml.
- 2 Ajouter une pastille de DPD Glycine dans un cuve. Ecraser la pastille.
- 3 Puis ajouter une pastille DPD No. 4 dans chaque cuve et écraser les pastilles. Fermer la cuvette avec son couvercle. Dissoudre les pastilles en agitant la cuvette.
- 4 Placer la cuve avec DPD Glycine **et** la DPD No.4 - pastille dans la chambre de mesure de gauche. Placer la cuve avec la DPD No.4 -pastille dans la chambre de mesure de droite.
- 5 Faire concorder la couleur obtenue avec le CHECKIT®Disc et lire le résultat en mg/l O₃.

L'eau dans le disque comparateur: ouvrir, nettoyer avec l'eau distillée, sécher, fermer.



Istruzioni per la determinazione di Ozono (DPD)

CHECKIT®Disc
Ozono (DPD)

Campo di misurazione
0 - 1,0 mg/l O₃

Cod. art.
14 62 70

Precisione di dischi: +/- 5% del valore finale.

Comprese

DPD No. 4

Cod. art. ogni

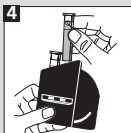
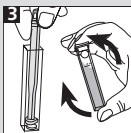
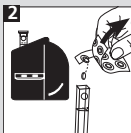
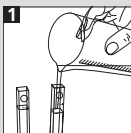
100 pezzi

51 12 20 BT

Ozono (DPD) (DPD No. 4 -comprese)

- 1 Riempire le due cuvette con il campione fino alla tacca 10 ml.
- 2 Porre una cuvetta come bianco nella camera a sinistra del comparatore. Introdurre una compressa DPD No. 4 nell'altra cuvetta.
- 3 Frantumarla con un agitatore pulito. Chiudere con il coperchio.
- 4 Far sciogliere la compressa capovolgendo la cuvetta che poi verrà inserita nella camera a destra.
- 5 In seguito alla compensazione con il CHECKIT®Disc il risultato viene letto come mg/l O₃.

Nel caso di acqua nel disco: Si prega di aprire e pulire con acqua distillata, poi asciugare e richiudere.



Istruzioni per la determinazione di Ozono in presenza di cloro

CHECKIT®Disc

Ozono (DPD)

Campo di misurazione

0 - 1,0 mg/l O₃

Cod. art.

14 62 70

Precisione di dischi: +/- 5% del valore finale.

Comprese

DPD No. 4

DPD Glycine

Cod. art. ogni

100 pezzi

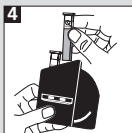
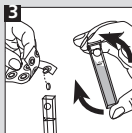
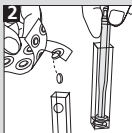
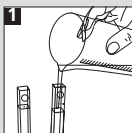
51 12 20 BT

51 21 70

Ozono in presenza di cloro (DPD No. 4 / DPD Glycine-comprese)

- 1 Riempire le due cuvette con il campione fino alla tacca 10 ml.
- 2 Introdurre una compressa DPD Glycine nell'altra cuvetta. Frantumarla con un agitatore pulito.
- 3 Introdurre una compressa DPD No. 4 in ogni cuvetta. Frantumarla con un agitatore pulito. Chiudere con il coperchio. Far sciogliere la compressa capovolgendo la cuvetta.
- 4 Mette la cuvetta con la tableta Glycine e DPD No.4 nella camera sinistra del comparatore. La cuvetta che contiene **solamente** la tableta DPD No.4 si mette nella camera destra del comparatore.
- 5 In seguito alla compensazione con il CHECKIT®Disc il risultato viene letto come mg/l O₃.

Nel caso di acqua nel disco: Si prega di aprire e pulire con acqua distillata, poi asciugare e richiudere.



Instrucciones para la determinación de Ozono (DPD)

CHECKIT®Disc

Ozono (DPD)

Campo de medición

0 - 1,0 mg/l O₃

Número de pedido

14 62 70

Precisión de discos: ± 5 % del valor final

Tabletas

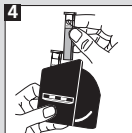
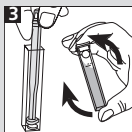
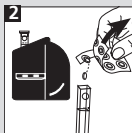
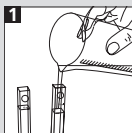
DPD No. 4

Número de pedido

51 12 20 BT

Ozono (DPD) (DPD No. 4 -tableta)

- 1 Llenar ambas cubetas con la prueba hasta la marca de 10 ml.
- 2 Colocar una cubeta como ensayo en blanco en el compartimento izquierdo del Comparador. Añadir a la segunda cubeta una tableta DPD No. 4.
- 3 Machacarla con una varilla. Cerrarla con su tapa y moverlos para disolver las tabletas.
- 4 Colocar esta cubeta en el compartimento derecho.
- 5 Una vez realizada la igualación del color producido en la cubeta con el CHECKIT®Disc, leer el resultado de mg/l O₃.
Cuando quede agua en el comparador: abrirlo, limpiar con agua destilada, secar y cerrar.



Instrucciones para la determinación de Ozono en presencia de cloro

CHECKIT® Disc	Campo de medición	Número de pedido
Ozono (DPD)	0 - 1,0 mg/l O ₃	14 62 70

Precisión de discos: ± 5 % del valor final

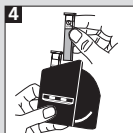
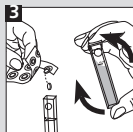
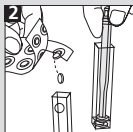
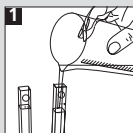
Tabletas

DPD No. 4
DPD Glycine

Número de pedido
51 12 20 BT
51 21 70

Ozono en presencia de cloro (DPD No. 4 / DPD Glycine-tableta)

- 1 Llenar ambas cubetas con la prueba hasta la marca de 10 ml.
- 2 Añadir a una cubeta una tableta DPD Glycine. Machacarla con una varilla.
- 3 Añadir una tableta DPD No. 4 en cada cubeta, machacarla con una varilla y cerrarla con su tapa. Moverlos para disolver las tabletas.
- 4 Poner la cubeta con las tabletas Glycine y DPD No. 4 en el compartimento a la izquierda del comarador. La cubeta que contiene **solamente** DPD No.4 se pone en el comartimento a la derecha.
- 5 Una vez realizada la igualación del color producido en la cubeta con el CHECKIT® Disc, leer el resultado de mg/l O₃. Cuando quede agua en el comparador: abrirlo, limpiar con agua destilada, secar y cerrar.



<i>Other available tests</i>	<i>Range</i>	<i>Other available tests</i>	<i>Range</i>
Aluminium	0 - 0.3 mg/l Al	Iron TPTZ	0 - 1,8 mg/l Fe
Ammonia	0 - 1 mg/l N	Manganese LR	0.1 - 0.7 mg/l Mn
Ammonia vario	0 - 0.5 mg/l N	Manganese VLR*	0.02 - 0.2 mg/l Mn
Bromine	0.5 - 5 mmol/l	Molybdate	0 - 100 mg/l MoO ₄
Chlorine	0 - 1 mg/l Cl ₂	Nitrate LR	0 - 1 mg/l N
free, combined,	0.1 - 2 mg/l Cl ₂	Nitrate HR	10 - 100 mg/l NO ₃
total	0 - 4 mg/l Cl ₂	Nitrite LR	0 - 0.5 mg/l N
Chlorine*	0.02 - 0.3 mg/l Cl ₂	Nitrite LR vario	0 - 0.3 mg/l N
Chlorine Dioxide*	0.01 - 0.2 mg/l ClO ₂	Ozone (DPD)**	0 - 1.0 mg/l O ₃
Chlorine HR (total)	10 - 300 mg/l Cl ₂	Ozone (DPD)	0 - 1.0 mg/l O ₃
Chlor vario	0 - 3.5 mg/l Cl	pH	5.2 - 6.8 pH, 6.0 - 7.6 pH, 6.5 - 8.4 pH, 4 - 10 pH
Copper (Cu²⁺)	0 - 1 mg/l Cu	Phosphate LR	0 - 4 mg/l PO ₄
Copper LR*	0 - 1 mg/l Cu	Phosphate HR	0 - 80 mg/l PO ₄
(free + total)		Phosphate vario	0 - 2.5 mg/l PO ₄
Copper HR	0 - 5 mg/l Cu	Säurekapazität Ks4.3	0,5 - 5 mmol/l
(free + total)		Silica LR	0.25 - 4 mg/l SiO ₂
Copper LR vario*	0 - 1 mg/l Cu	Silica vario	0 - 100 mg/l SiO ₂
(free)		Silica VLR*	0 - 1 mg/l SiO ₂
Copper HR vario	0 - 5 mg/l Cu	Sodium Hypochlorite	2 - 18 % NaOCl
(free)		Sulfite LR	0.5 - 10 mg/l SO ₃ ²⁻
DEHA	0 - 0,5 mg/l DEHA	Total Alkalinity	20-240 mg/l CaCO ₃
Fluoride	0.2 - 2 mg/l F	Zinc	0 - 1 mg/l Zn
Iron LR	0.05 - 1 mg/l Fe		
Iron HR	1 - 10 mg/l Fe		

* Only with CHECKIT®Comparator D55 with mirror optics

** in presence of chlorine