

Instrucciones para la determinación de Alcalinidad total

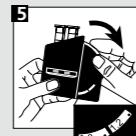
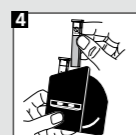
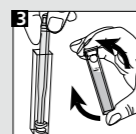
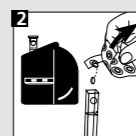
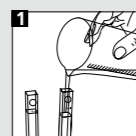
CHECKIT®Disc	Campo de medición	Número de pedido
Alcalinidad total	20 - 240 mg/l CaCO ₃	14 64 50

Precisión de discos: ± 5 % del valor final

Tabletas	Número de pedido
ALKACHECK	51 32 00

Alcalinidad total (ALKACHECK-tableta)

- 1 Llenar ambas cubetas con la prueba hasta la marca de 10 ml.
- 2 Colocar una cubeta como ensayo en blanco en el compartimento izquierdo del Comparator. Añadir a la segunda cubeta una tableta ALKACHECK.
- 3 Machacarla con una varilla. Cerrarla con su tapa y moverlos para disolver las tabletas.
- 4 Colocar esta cubeta en el compartimento derecho.
- 5 Una vez realizada la igualación del color producido en la cubeta con el CHECKIT®Disc, leer el resultado de mg/l CaCO₃.



Instrucciones para la determinación de Alcalinidad total

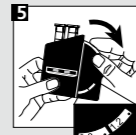
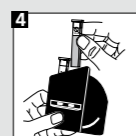
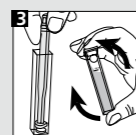
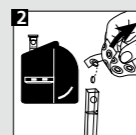
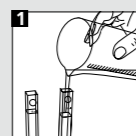
CHECKIT®Disc	Campo de medición	Número de pedido
Alcalinidad total	20 - 240 mg/l CaCO ₃	14 64 50

Precisión de discos: ± 5 % del valor final

Tabletas	Número de pedido
ALKACHECK	51 32 00

Alcalinidad total (ALKACHECK-tableta)

- 1 Llenar ambas cubetas con la prueba hasta la marca de 10 ml.
- 2 Colocar una cubeta como ensayo en blanco en el compartimento izquierdo del Comparator. Añadir a la segunda cubeta una tableta ALKACHECK.
- 3 Machacarla con una varilla. Cerrarla con su tapa y moverlos para disolver las tabletas.
- 4 Colocar esta cubeta en el compartimento derecho.
- 5 Una vez realizada la igualación del color producido en la cubeta con el CHECKIT®Disc, leer el resultado de mg/l CaCO₃.



- (D) Wichtig:**
Die Küvette muss mit dem Punkt zum Betrachter im Messschacht positioniert werden.
Um höchste Genauigkeit zu gewährleisten, Farbabgleich immer gegen Tagesnordlicht durchführen.
Küvetten müssen nach jeder Bestimmung gründlich gespült werden. CHECKIT®Disc lichtgeschützt / dunkel lagern.

- (GB) Important:**
Place the cell facing the mark (point) in the compartment. It is essential to rinse the cells thoroughly after each test. To obtain maximum accuracy view and match colour against north day light always. Store CHECKIT®Disc in the dark.

- (F) Important:**
La cuve doit être positionnée de façon à ce que le point concorde avec le repère de la chambre de mesure.
Pour assurer la plus grande exactitude, faire concorder la couleur avec le CHECKIT®Disc en tenant le comparateur face à la lumière.
Les cuves doivent être bien nettoyées après chaque mesure. Stocker CHECKIT®Disk dans un endroit sombre.

- (I) Importante:**
La cuvetta deve essere posizionata nel pozzetto di misurazione con il punto verso l'osservatore.
Per garantire la massima precisione eseguire sempre la compensazione del colore contro la luce del giorno.
Le cuvette devono essere sempre lavate accuratamente in seguito ad ogni determinazione. Conservare CHECKIT®Disc oscuro.

- (E) Importante:**
Posicionar la cubeta en el compartimento de tal forma, que el punto se encuentre dirigido hacia el usuario.
Para garantizar una exactitud máxima, realizar el ajuste cromático siempre con luz diurna. Las cubetas se deberán de limpiar y enjuagar minuciosamente después de cada determinación. Almacene CHECKIT®Disc obscuro.

- (D) Wichtig:**
Die Küvette muss mit dem Punkt zum Betrachter im Messschacht positioniert werden.
Um höchste Genauigkeit zu gewährleisten, Farbabgleich immer gegen Tagesnordlicht durchführen.
Küvetten müssen nach jeder Bestimmung gründlich gespült werden. CHECKIT®Disc lichtgeschützt / dunkel lagern.

- (GB) Important:**
Place the cell facing the mark (point) in the compartment. It is essential to rinse the cells thoroughly after each test. To obtain maximum accuracy view and match colour against north day light always. Store CHECKIT®Disc in the dark.

- (F) Important:**
La cuve doit être positionnée de façon à ce que le point concorde avec le repère de la chambre de mesure.
Pour assurer la plus grande exactitude, faire concorder la couleur avec le CHECKIT®Disc en tenant le comparateur face à la lumière.
Les cuves doivent être bien nettoyées après chaque mesure. Stocker CHECKIT®Disk dans un endroit sombre.

- (I) Importante:**
La cuvetta deve essere posizionata nel pozzetto di misurazione con il punto verso l'osservatore.
Per garantire la massima precisione eseguire sempre la compensazione del colore contro la luce del giorno.
Le cuvette devono essere sempre lavate accuratamente in seguito ad ogni determinazione. Conservare CHECKIT®Disc oscuro.

- (E) Importante:**
Posicionar la cubeta en el compartimento de tal forma, que el punto se encuentre dirigido hacia el usuario.
Para garantizar una exactitud máxima, realizar el ajuste cromático siempre con luz diurna. Las cubetas se deberán de limpiar y enjuagar minuciosamente después de cada determinación. Almacene CHECKIT®Disc obscuro.

Other available tests	Range	Other available tests	Range
Aluminium	0 - 0.3 mg/l Al	Iron HR	1 - 10 mg/l Fe
Ammonia	0 - 1 mg/l N	Iron TPTZ	0 - 1.8 mg/l Fe
Bromine	0.5 - 5 mmol/l	Manganese LR	0.1 - 0.7 mg/l Mn
Chlorine	0 - 1 mg/l Cl ₂	Manganese VLR*	0.02 - 0.2 mg/l Mn
free, combined,	0.1 - 2 mg/l Cl ₂	Molybdate	0 - 100 mg/l MoO ₄
total	0 - 4 mg/l Cl ₂	Nitrate LR	0 - 1 mg/l N
Chlorine*	0.02 - 0.3 mg/l Cl ₂	Nitrate HR	10 - 100 mg/l NO ₃
Chlorine Dioxide*	0.01 - 0.2 mg/l ClO ₂	Nitrite LR	0 - 0.5 mg/l N
Chlorine HR (total)	10 - 300 mg/l Cl ₂	Ozone (DPD)	0 - 0.7 mg/l O ₃
Chlor vario	0 - 3.5 mg/l Cl	pH	5.2 - 6.8 pH, 6.0 - 7.6 pH, 6.5 - 8.4 pH, 4 - 10 pH
Copper (Cu ²⁺)	0 - 1 mg/l Cu	Phosphate LR	0 - 4 mg/l PO ₄
Copper LR*	0 - 1 mg/l Cu	Phosphate HR	0 - 80 mg/l PO ₄
(free + total)		Phosphat vario	0 - 2.5 mg/l PO ₄
Copper HR	0 - 5 mg/l Cu	Säurekapazität Ks4.3	0.5 - 5 mmol/l
(free + total)		Silica LR	0.25 - 4 mg/l SiO ₂
Copper LR vario	0 - 1 mg/l Cu	Silica VLR*	0 - 1 mg/l SiO ₂
(free)		Sulfite LR	0.5 - 10 mg/l SO ₃ ²⁻
Copper HR vario	0 - 5 mg/l Cu	Total Alkalinity	20-240 mg/l CaCO ₃
(free)		Zinc	0 - 1 mg/l Zn
DEHA	0 - 0.5 mg/l DEHA		
Fluoride	0.2 - 2 mg/l F		
Iron LR	0.05 - 1 mg/l Fe		

*Only with CHECKIT®Comparator D55 with mirror optics

Update: www.tintometer.de
No.: 00387160

Technical changes without notice
Printed in Germany 03/07

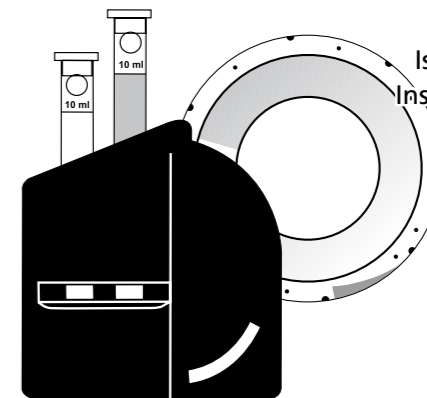
Other available tests	Range	Other available tests	Range
Aluminium	0 - 0.3 mg/l Al	Iron HR	1 - 10 mg/l Fe
Ammonia	0 - 1 mg/l N	Iron TPTZ	0 - 1.8 mg/l Fe
Bromine	0.5 - 5 mmol/l	Manganese LR	0.1 - 0.7 mg/l Mn
Chlorine	0 - 1 mg/l Cl ₂	Manganese VLR*	0.02 - 0.2 mg/l Mn
free, combined,	0.1 - 2 mg/l Cl ₂	Molybdate	0 - 100 mg/l MoO ₄
total	0 - 4 mg/l Cl ₂	Nitrate LR	0 - 1 mg/l N
Chlorine*	0.02 - 0.3 mg/l Cl ₂	Nitrate HR	10 - 100 mg/l NO ₃
Chlorine Dioxide*	0.01 - 0.2 mg/l ClO ₂	Nitrite LR	0 - 0.5 mg/l N
Chlorine HR (total)	10 - 300 mg/l Cl ₂	Ozone (DPD)	0 - 0.7 mg/l O ₃
Chlor vario	0 - 3.5 mg/l Cl	pH	5.2 - 6.8 pH, 6.0 - 7.6 pH, 6.5 - 8.4 pH, 4 - 10 pH
Copper (Cu ²⁺)	0 - 1 mg/l Cu	Phosphate LR	0 - 4 mg/l PO ₄
Copper LR*	0 - 1 mg/l Cu	Phosphate HR	0 - 80 mg/l PO ₄
(free + total)		Phosphat vario	0 - 2.5 mg/l PO ₄
Copper HR	0 - 5 mg/l Cu	Säurekapazität Ks4.3	0.5 - 5 mmol/l
(free + total)		Silica LR	0.25 - 4 mg/l SiO ₂
Copper LR vario	0 - 1 mg/l Cu	Silica VLR*	0 - 1 mg/l SiO ₂
(free)		Sulfite LR	0.5 - 10 mg/l SO ₃ ²⁻
Copper HR vario	0 - 5 mg/l Cu	Total Alkalinity	20-240 mg/l CaCO ₃
(free)		Zinc	0 - 1 mg/l Zn
DEHA	0 - 0.5 mg/l DEHA		
Fluoride	0.2 - 2 mg/l F		
Iron LR	0.05 - 1 mg/l Fe		

*Only with CHECKIT®Comparator D55 with mirror optics

Update: www.tintometer.de
No.: 00387160

Technical changes without notice
Printed in Germany 03/07

CHECKIT®Comparator

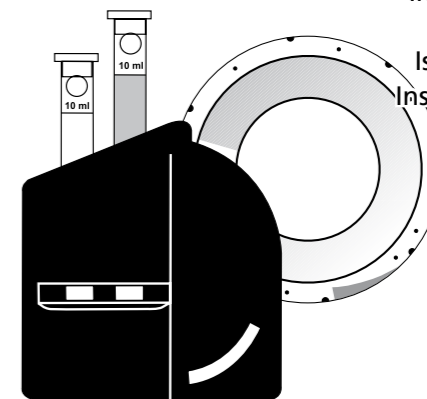


Bedienungsanleitung **(D)**
Instruction Manual **(GB)**
Mode d'emploi **(FR)**
Istruzioni per l'uso **(I)**
Instrucciones de uso **(ES)**

Säurekapazität Ks4.3
Total Alkalinity
Alcalinité totale
Alcalinità totale
Alcalinidad total

Tablet Reagent

CHECKIT®Comparator



Bedienungsanleitung **(D)**
Instruction Manual **(GB)**
Mode d'emploi **(FR)**
Istruzioni per l'uso **(I)**
Instrucciones de uso **(ES)**

Säurekapazität Ks4.3
Total Alkalinity
Alcalinité totale
Alcalinità totale
Alcalinidad total

Tablet Reagent

Anleitung zur Bestimmung von Säurekapazität K_{s4.3}

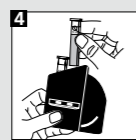
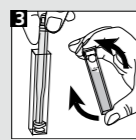
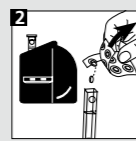
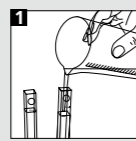
CHECKIT®Disc Säurekapazität K_{s4.3} Messbereich 0,5 - 5 mmol/l Bestell-Nr. 14 64 60

Genauigkeit: ± 5 % vom Messbereichsendwert

Tabletten Bestell-Nr. per 100 Stück
ALKACHECK 51 32 00

Säurekapazität (ALKACHECK-Tablette)

- 1 Beide Küvetten mit der Probe bis zur 10 ml-Marke füllen.
- 2 Eine Küvette als Blindprobe in die linke Kammer des Comparators stellen. In die andere Küvette eine ALKACHECK-Tablette geben.
- 3 Die Tablette mit Rührstab zerdrücken, Küvette mit dem Deckel verschließen. Tablette durch Umschwenken vollständig auflösen.
- 4 Die zweite Küvette in die rechte Kammer des Comparators stellen.
- 5 Nach dem Abgleich mit der CHECKIT®Disc wird das Ergebnis in mmol/l abgelesen.



Anleitung zur Bestimmung von Säurekapazität K_{s4.3}

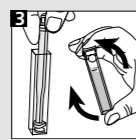
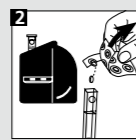
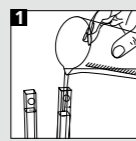
CHECKIT®Disc Säurekapazität K_{s4.3} Messbereich 0,5 - 5 mmol/l Bestell-Nr. 14 64 60

Genauigkeit: ± 5 % vom Messbereichsendwert

Tabletten Bestell-Nr. per 100 Stück
ALKACHECK 51 32 00

Säurekapazität (ALKACHECK-Tablette)

- 1 Beide Küvetten mit der Probe bis zur 10 ml-Marke füllen.
- 2 Eine Küvette als Blindprobe in die linke Kammer des Comparators stellen. In die andere Küvette eine ALKACHECK-Tablette geben.
- 3 Die Tablette mit Rührstab zerdrücken, Küvette mit dem Deckel verschließen. Tablette durch Umschwenken vollständig auflösen.
- 4 Die zweite Küvette in die rechte Kammer des Comparators stellen.
- 5 Nach dem Abgleich mit der CHECKIT®Disc wird das Ergebnis in mmol/l abgelesen.



Instructions for the determination of Total Alkalinity

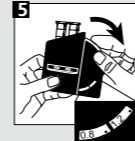
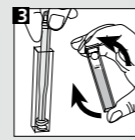
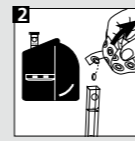
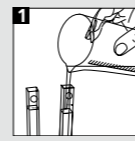
CHECKIT®Disc Total Alkalinity Measurement Range 20 - 240 mg/l CaCO₃ Order Code 14 64 50

Accuracy: ± 5 % full scale

Tablets Order Code (per 100 pcs)
ALKACHECK 51 32 00

Total Alkalinity (ALKACHECK-tablet)

- 1 Fill both cells to the 10 ml mark.
- 2 Place one cell in the left-hand compartment of the comparator as a blank. Add one ALKACHECK-tablet in the other cell.
- 3 Crush the tablet, close the cell with a lid. Swirl it until the tablet is dissolved.
- 4 Place this second cell in the right-hand compartment of the comparator.
- 5 Match the two colour fields against north day light and read off the result as mg/l CaCO₃.



Instructions for the determination of Total Alkalinity

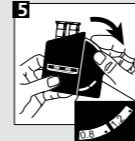
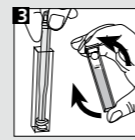
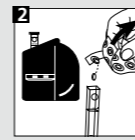
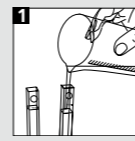
CHECKIT®Disc Total Alkalinity Measurement Range 20 - 240 mg/l CaCO₃ Order Code 14 64 50

Accuracy: ± 5 % full scale

Tablets Order Code (per 100 pcs)
ALKACHECK 51 32 00

Total Alkalinity (ALKACHECK-tablet)

- 1 Fill both cells to the 10 ml mark.
- 2 Place one cell in the left-hand compartment of the comparator as a blank. Add one ALKACHECK-tablet in the other cell.
- 3 Crush the tablet, close the cell with a lid. Swirl it until the tablet is dissolved.
- 4 Place this second cell in the right-hand compartment of the comparator.
- 5 Match the two colour fields against north day light and read off the result as mg/l CaCO₃.



Mode d'emploi pour la détermination du Alcalinité totale

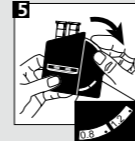
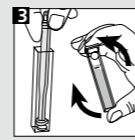
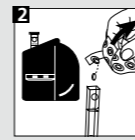
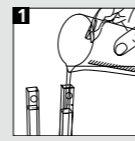
CHECKIT®Disc Plage de mesure 20 - 240 mg/l CaCO₃ Référence de commande 14 64 50

Precision de la mesure: ± 5 % de valeur plafond de la plage de mesure

Pastilles Référence de commande pour 100 pastilles
ALKACHECK 51 32 00

Alcalinité totale (ALKACHECK-pastille)

- 1 Remplir les deux cuves avec l'échantillon jusqu'à la marque 10 ml.
- 2 Placer une cuve dans la chambre de mesure de gauche du comparateur (solution témoin). Ajouter une pastille de ALKACHECK dans l'autre cuve.
- 3 Ecraser la pastille. Fermer la cuvette avec son couvercle. Dissoudre la pastille en agitant la cuvette.
- 4 Placer celle-ci dans la chambre de mesure de droite.
- 5 Faire concorder la couleur obtenue avec le CHECKIT®Disc et lire le résultat en mg/l CaCO₃.



Mode d'emploi pour la détermination du Alcalinité totale

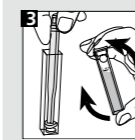
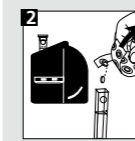
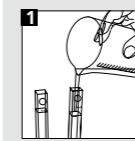
CHECKIT®Disc Plage de mesure 20 - 240 mg/l CaCO₃ Référence de commande 14 64 50

Precision de la mesure: ± 5 % de valeur plafond de la plage de mesure

Pastilles Référence de commande pour 100 pastilles
ALKACHECK 51 32 00

Alcalinité totale (ALKACHECK-pastille)

- 1 Remplir les deux cuves avec l'échantillon jusqu'à la marque 10 ml.
- 2 Placer une cuve dans la chambre de mesure de gauche du comparateur (solution témoin). Ajouter une pastille de ALKACHECK dans l'autre cuve.
- 3 Ecraser la pastille. Fermer la cuvette avec son couvercle. Dissoudre la pastille en agitant la cuvette.
- 4 Placer celle-ci dans la chambre de mesure de droite.
- 5 Faire concorder la couleur obtenue avec le CHECKIT®Disc et lire le résultat en mg/l CaCO₃.



Istruzioni per la determinazione di Alcalinité totale

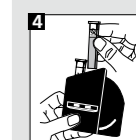
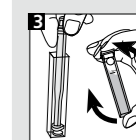
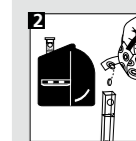
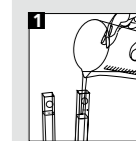
CHECKIT®Disc Campo di misurazione 20 - 240 mg/l CaCO₃ Cod. art. 14 64 50

Precisione di dischi: +/- 5% del valore finale.

Compresse Cod. art. ogni 100 pezzi
ALKACHECK 51 32 00

Alcalinité totale (ALKACHECK-compresse)

- 1 Riempire le due cuvette con il campione fino alla tacca 10 ml.
- 2 Porre una cuvetta come bianco nella camera a sinistra del comparatore. Introdurre una compressa ALKACHECK.
- 3 Frantumarla con un agitatore pulito. Chiudere con il coperchio.
- 4 Far sciogliere la compressa capovolgendo la cuvetta che poi verrà inserita nella camera a destra.
- 5 In seguito alla compensazione con il CHECKIT®Disc il risultato viene letto come mg/l CaCO₃.



Istruzioni per la determinazione di Alcalinité totale

CHECKIT®Disc Campo di misurazione 20 - 240 mg/l CaCO₃ Cod. art. 14 64 50

Precisione di dischi: +/- 5% del valore finale.

Compresse Cod. art. ogni 100 pezzi
ALKACHECK 51 32 00

Alcalinité totale (ALKACHECK-compresse)

- 1 Riempire le due cuvette con il campione fino alla tacca 10 ml.
- 2 Porre una cuvetta come bianco nella camera a sinistra del comparatore. Introdurre una compressa ALKACHECK.
- 3 Frantumarla con un agitatore pulito. Chiudere con il coperchio.
- 4 Far sciogliere la compressa capovolgendo la cuvetta che poi verrà inserita nella camera a destra.
- 5 In seguito alla compensazione con il CHECKIT®Disc il risultato viene letto come mg/l CaCO₃.

