

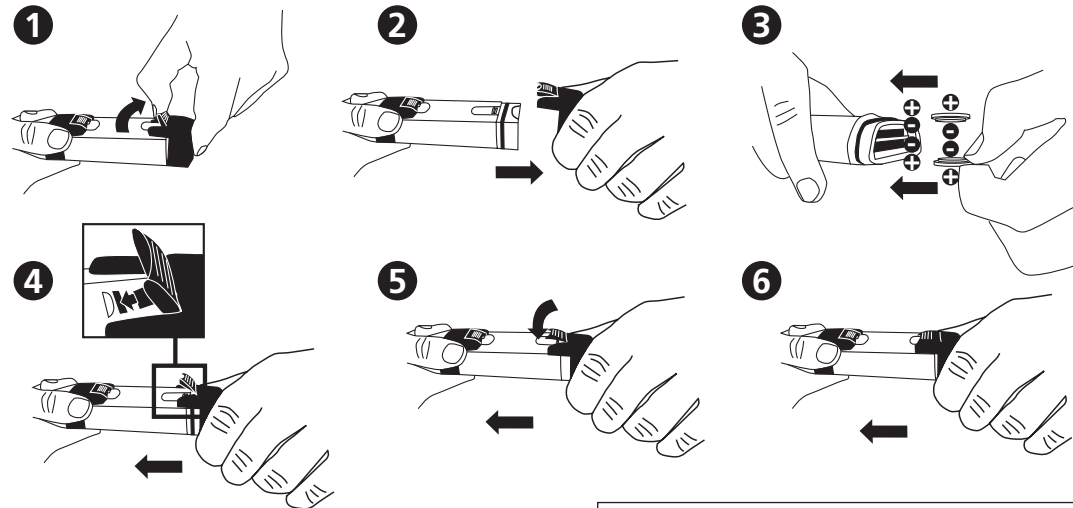


# SD 60

Redox

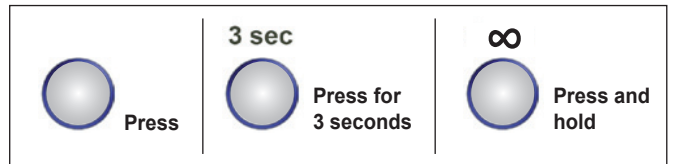
GB

## Insert the batteries

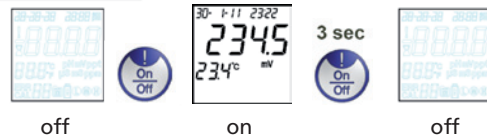


## MEASUREMENT

Remove protective cap from the probe

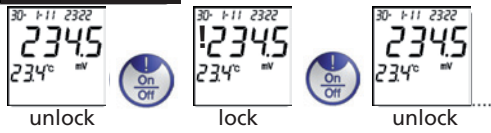


### A. Power ON/OFF



Automatically turns off after 20 minutes of inactivity.

### B. Lock/Unlock Data



Possible slight delay after pressing before freeze of the data (!).

### C. Backlight ON/OFF



### D. Store Data



After 3 sec. the file no. temporarily appears on the display, e.g. 01. Once the storage has reached max. capacity, the data will overwrite the oldest files.

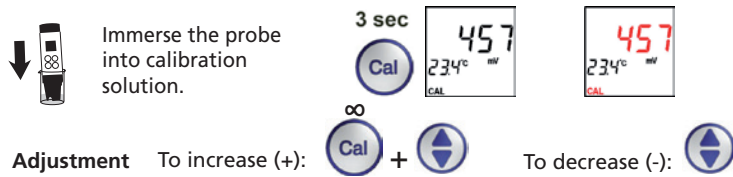
## ORP CALIBRATION

Characters in **RED** represent „Flashing symbols“.

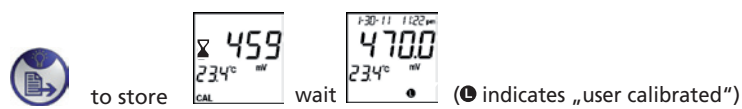
- Re-Calibrate according to individual recommendations! Rinse the electrode with distilled water after each measurement.
- Choose Lovibond® ORP Standard Solution

### E. Calibrate ORP

Remove protective cap from the probe.  
Power ON (see A)



Max. ± 150 mV of window:



# SETUP

## F. System Setup

Characters in **RED** represent „Flashing symbols“.

Unfreeze data first (see frontside B) before Menu selection.

3 sec  
 Recall Data go to I.  
 1x Set Date and Time go to III.  
 2x Set Temperature go to IV.  
 3x Set Data/Time display type go to V.  
 To enter.

### I. Recall Data

3 sec  
 Press for further files.  
 Exit

Delete stored data.

3 sec  
 Automatic Exit

### II. Set Date and Time

Select V. 'Set Data/ Time display type' first.

3 sec  
 1x

24 hour clock  
 Exit

am/pm 12 hour clock  
 Exit

Adjustment: to increase (+); to decrease (-)

### III. Set Temperature system (°C/°F)

3 sec  
 2x Exit

### IV. Set Data/Time display type

3 sec  
 3x Exit

am/pm 12 hour clock or 24 hour clock

#### Error Code and Actions

#	Description	Range	Actions
1	Electrode not installed or bad	Thermistor: 0.5k-100k Ω	Install or replace electrode
2	Not used		
3	Temperature out of range	0-60°C	Bring solution to the temperature within range
4	Not used		
5	Calibrated offset out of range	-100-100mV (compare to the default value)	Adjust to the correct ORP buffer value while calibrating or use the default value (take out batteries)
6	ORP out of range	-1800-1800mV	Use other solution

#### SD60 ORP Specification/Features

#	Specification
1	Operating range: 0-60°C, -1800-1800mV
2	1 point calibration with +/-150mV adjustable ORP value
3	mV resolution: 0.1mV(within ±1000mV) and 1mV(outside ±1000mV); Accuracy: ±20mV
4	Temperature resolution: 0.1°C; Accuracy: ±1°C, Selectable °C/°F system
5	Time and date display/stamp with 25 sets of data storage (non-volatile)
6	22x22mm LCD screen, with Yellow Green backlight
7	2x CR2032 batteries
8	Auto-power off to save battery (20 minutes non-use)

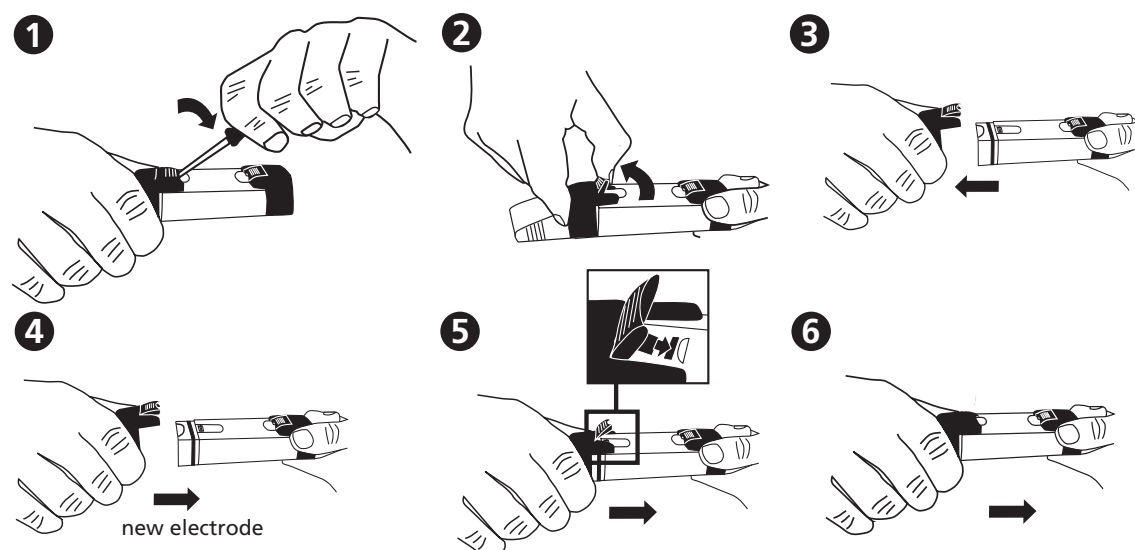
#### Content

1 ORP Meter SD 60 in a robust plastic case with strap  
 2 Batteries  
 1 Instruction Manual  
 Code: 419 48 01

#### Accessories

19 500 17 Battery CR 2032 (2 Batteries required)  
 19 48 21 Replacement electrode  
 38 48 01 Beaker, 100 ml  
 19 50 70 Standard solution

### VI. Electrode Replacement



Instruction manuals available in further languages, visit [www.aqualytic.com](http://www.aqualytic.com)