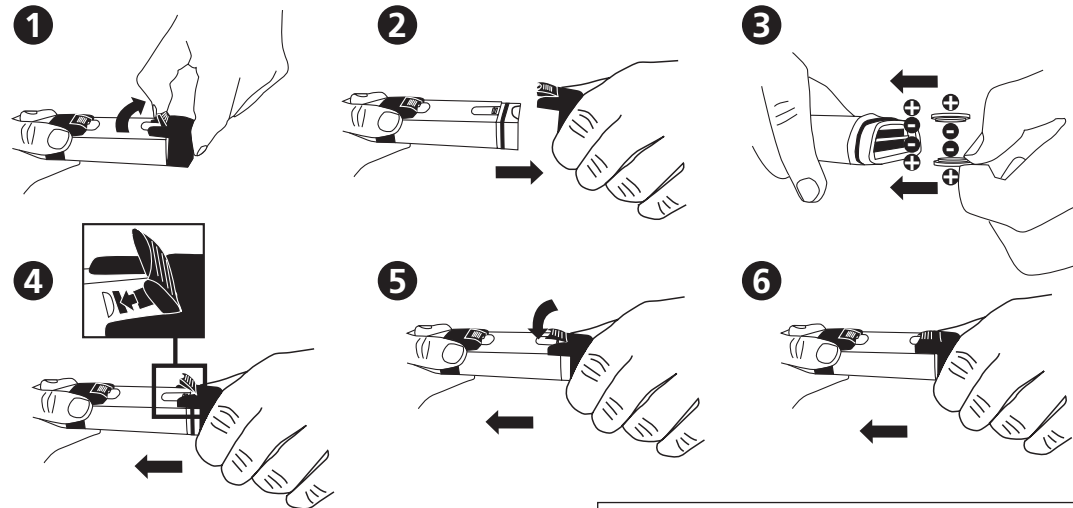




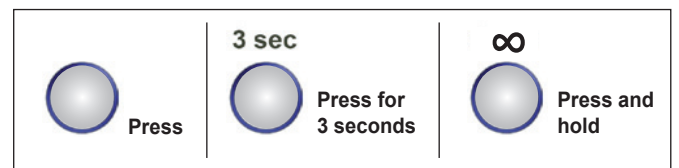
# SD 70 Con

## Insert the batteries

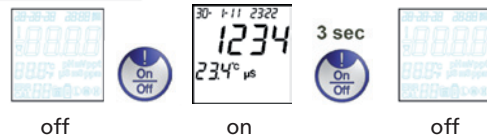


## MEASUREMENT

Remove protective cap from the probe

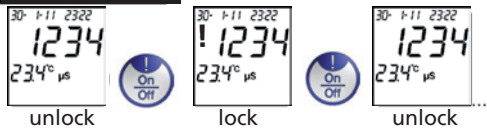


### A. Power ON/OFF



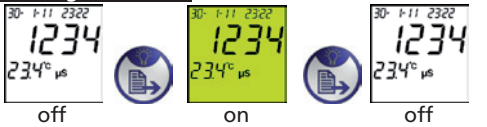
Automatically turns off after 8 minutes of inactivity.

### B. Lock/Unlock Data



Possible slight delay after pressing before freeze of the data (!).

### C. Backlight ON/OFF



### D. Store Data



After 3 sec. the file no. temporarily appears on the display, e.g. 01. Once the storage has reached max. capacity, the data will overwrite the oldest files.

## CON CALIBRATION

Characters in **RED** represent „Flashing symbols“.

- Re-Calibrate according to individual recommendations! Rinse the electrode with distilled water after each measurement.
- If temperature is out of range, „ERR“ will appear. Meter automatically returns to Measurement Mode.
- If the default reading is more than 30% out of standard buffer range, „ERR“ will appear.

### E1. Auto Mode

Remove protective cap from the probe.  
Power ON (see A)

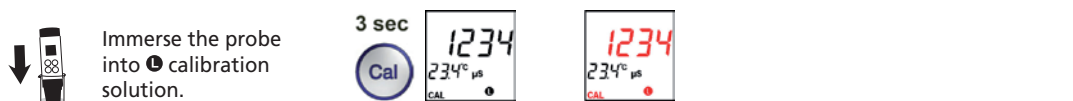
Auto-recognition for **1**: 1413 μS and **2**: 12.88 mS



### E2. Manual Mode

Remove protective cap from the probe.  
Power ON (see A)

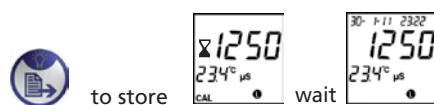
**1**: Limited to 200 ~ 2000 μS; **2**: limited to 2.00 ~ 20.00 mS



Adjustment To increase (+): Cal + ↑ To decrease (-): ↓



Adjustment: Cal + ↑ to increase (+); ↓ to decrease (-)



# SETUP

## F. System Setup

Characters in **RED** represent „Flashing symbols“.

Unfreeze data first (see frontside B) before Menu selection.

3 sec Recall Data go to I.      1x Select Buffer System go to II.      2x Set Date and Time go to III.

3x Set Temperature go to IV.      4x Set Data/Time display type go to V.      To enter.

### I. Recall Data

3 sec Press for further files. Exit

Delete stored data.

3 sec Automatic Exit

### II. Select Calibration Mode

3 sec 1x (Auto) (Manual) Exit

### III. Set Date and Time

Select V. 'Set Data/ Time display type' first.

3 sec 2x 24 hour clock

Minutes Hours Year Month Day Exit

am/pm 12 hour clock

AM PM Minutes Hours Year Day Month Exit

Adjustment: to increase (+); to decrease (-)

### IV. Set Temperature system (°C/°F)

3 sec 3x 23.4°C 23.4°C 74°F 23.4°C Exit

### V. Set Data/Time display type

3 sec 4x select select Exit

am/pm 12 hour clock      or      24 hour clock

#### Error Code and Actions

#	Description	Range	Actions
1	Electrode not installed or bad	Thermistor: 0.5k~100k Ω	Install or replace electrode
2	Not used		
3	Temperature out of range	0~60 °C	Bring solution to the temperature within range
4	Not used		
5	Calibrated value out of range	70%~130% (compare to the default value)	Re-calibrate or replace the electrode or use the default value (remove batteries)
6	Conductivity out of range	<20.00mS	Use other solution

#### SD70 Conductivity Specification/Features

#	Specification
1	Operating range: 0~60°C, <20.00mS
2	Automatic switch over μS and mS. μS: 1~1999μS; mS: 2.00~20.00mS
3	1 or 2 points calibration for auto mode. Standard buffers used: 1413μS and/or 12.88mS
4	Up to 2 points calibration for manual mode, +/-50% adjustable value
5	Conductivity resolution: 1μS(<=1999μS) and 0.01mS(2.00~20.00mS)
6	Temperature resolution: 0.1°C; Accuracy: ±1°C. Selectable °C/°F system
7	Automatic temperature compensation (2%/°C)
8	Time and date display/stamp with 25 sets of data storage (non-volatile)
9	22x22mm LCD screen, with Yellow Green backlight
10	2x CR2032 batteries
11	Auto-power off to save battery (8 minutes inactivity)

#### Content

- 1 Con Meter SD 70 in a robust plastic case with strap
  - 2 Batteries
  - 1 Instruction Manual
- Order Code: **419 48 02**

#### Accessories

- 195 00 17 Battery CR 2032 (2 Batteries required)
- 19 48 22 Replacement electrode
- 38 48 01 Beaker, 100 ml

### VI. Electrode Replacement

new electrode

Instruction manuals available in further languages, visit [www.aqualytic.de](http://www.aqualytic.de)