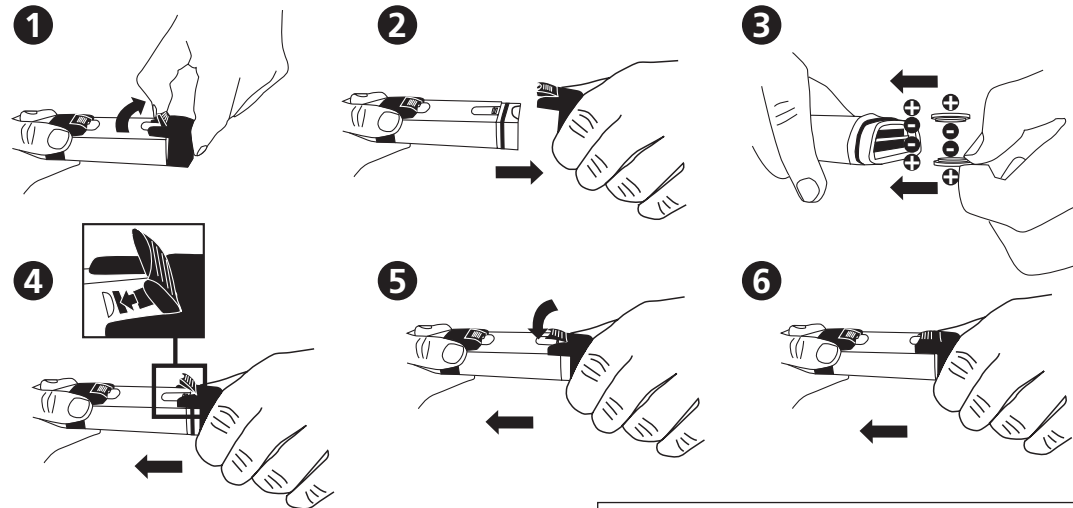




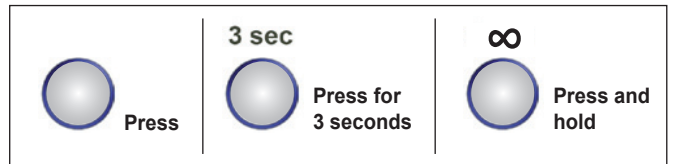
SD 80 TDS

Insert the batteries



MEASUREMENT

Remove protective cap from the probe



A. Power ON/OFF



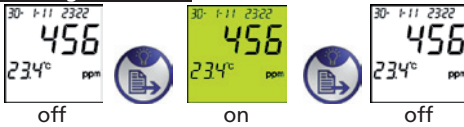
Automatically turns off after 8 minutes of inactivity.

B. Lock/Unlock Data



Possible slight delay after pressing before freeze of the data (!).

C. Backlight ON/OFF



D. Store Data



After 3 sec. the file no. temporarily appears on the display, e.g. 01. Once the storage has reached max. capacity, the data will overwrite the oldest files.

TDS CALIBRATION

Characters in **RED** represent „Flashing symbols“.

- Re-Calibrate according to individual recommendations! Rinse the electrode with distilled water after each measurement.
- If temperature is out of range, „ERR“ will appear. Meter automatically returns to Measurement Mode.
- If the default reading is more than 30% out of standard buffer range, „ERR“ will appear.

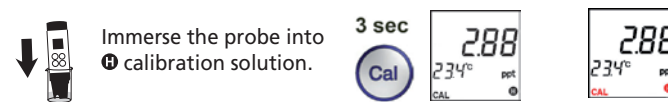
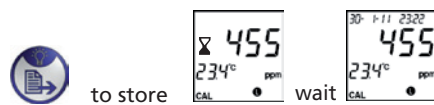
E. Calibrate TDS

Remove protective cap from the probe.
Power ON (see A)

Auto-recognition for ① : 100~999 ppm and ② : 1.00~10.00 ppt



Adjustment: to increase (+): + to decrease (-):



Adjustment: to increase (+): + to decrease (-):

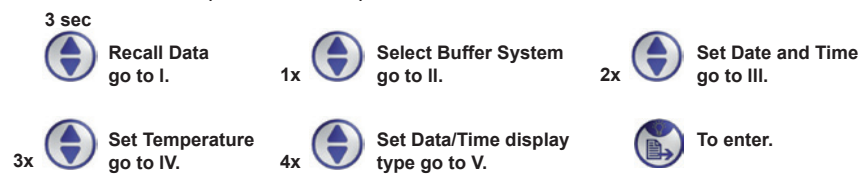


SETUP

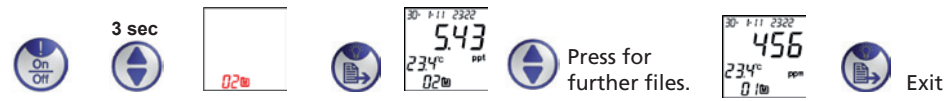
F. System Setup

Characters in **RED** represent „Flashing symbols“.

Unfreeze data first (see frontside B) before Menu selection.



I. Recall Data



Delete stored data.

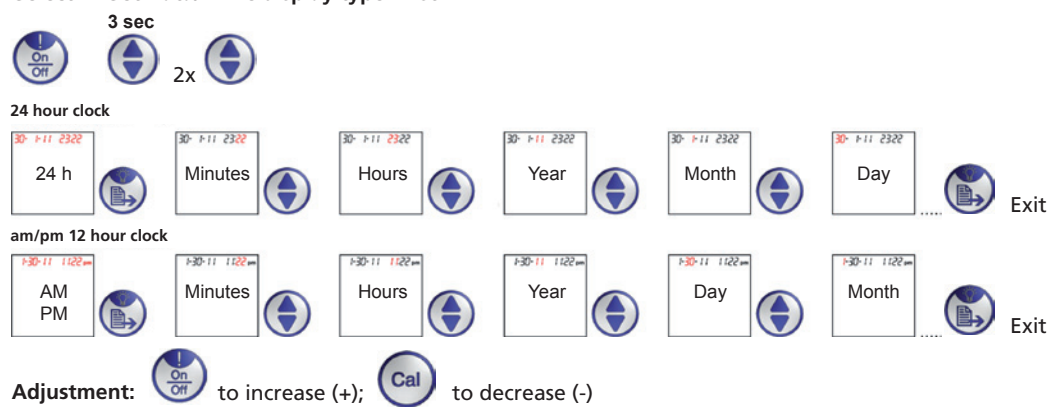


II. Select TDS Factor (0.7/0.5)



III. Set Date and Time

Select V. 'Set Data/ Time display type' first.



IV. Set Temperature system (°C/°F)



V. Set Data/Time display type



Error Code and Actions

#	Description	Range	Actions
1	Electrode not installed or bad	Thermistor: 0.5k~100k Ω	Install or replace electrode
2	Not used		
3	Temperature out of range	0~60°C	Bring solution to the temperature within range
4	Not used		
5	Calibrated value out of range	70%~130% (compare to the default value)	Re-calibrate or replace the electrode or use the default value (remove batteries)
6	TDS out of range	<10.00ppt	Use other solution

SD80 TDS Specification/Features

#	Specification
1	Operating range: 0~60°C, <10.00ppt
2	Automatic switch over ppm and ppt. ppm:0~999ppm; ppt: 1.00~10.00ppt
3	Up to 2 points manual mode calibration, +/-50% adjustable value
4	TDS resolution: 1ppm(<=999ppm) and 0.01ppt(1.00~10.00ppt)
5	Temperature resolution: 0.1°C; Accuracy: ±1°C, Selectable °C/°F system
6	Selectable TDS factor, 442.0.7; NaCl:0.5
7	Time and date display/stamp with 25 sets of data storage (non-volatile)
8	22x22mm LCD screen, with Yellow Green backlight
9	2x CR2032 batteries
10	Auto-power off to save battery (8 minutes inactivity)

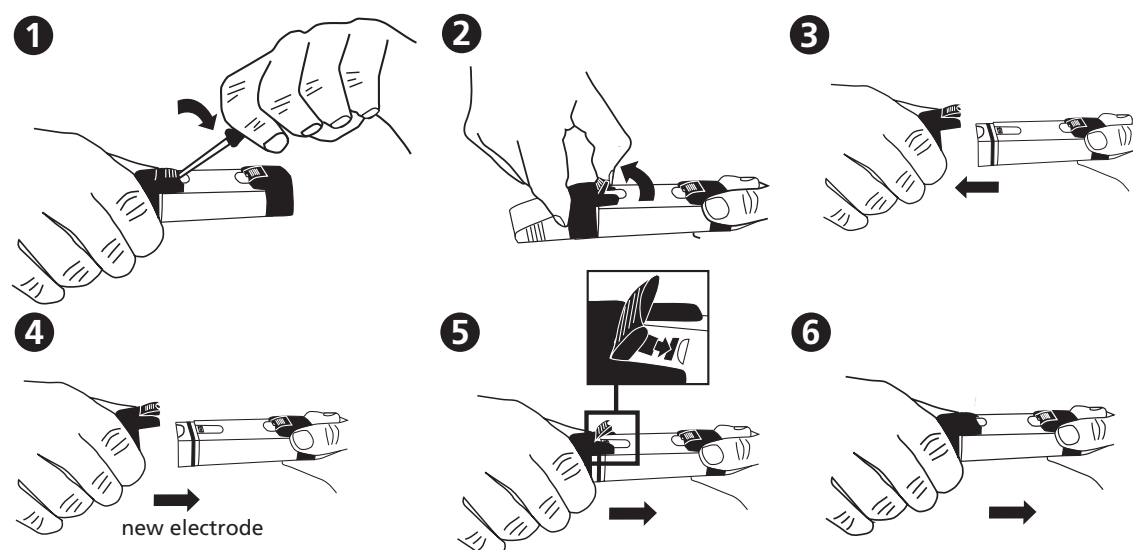
Content

- 1 TDS Meter SD 80 in a robust plastic case with strap
 - 2 Batteries
 - 1 Instruction Manual
- Code: 419 48 03

Accessories

- 195 00 17 Battery CR 2032 (2 Batteries required)
- 19 48 22 Replacement electrode
- 38 48 01 Beaker, 100 ml

VI. Electrode Replacement



Instruction manuals available in further languages, visit www.aqualytic.de